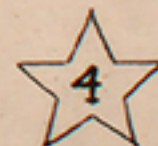


THE  
**LITTLE BROWN CHURCH**  
SONG AND CHORUS.



WORDS & MUSIC BY



**WM. S. PITTS.**

**OLIVER DITSON COMPANY,**

Boston: 453-463 Washington St. ————— London: 192 High Holborn, W.C.

NEW YORK:  
C. H. DITSON & CO.  
867 BROADWAY.

CHICAGO, ILL.:  
LYON & HEALY,  
COR. STATE & MONROE STS.

BOSTON:  
JOHN C. HAYNES & CO.  
33 COURT & 453 WASHINGTON STS.

PHILADELPHIA:  
J. E. DITSON & CO.  
1228 CHESTNUT ST.

*Entered according to Act of Congress, 1865, by H. M. Higgins in the clerk's office of the District Court for the Northern District of Illinois.*

# THE LITTLE BROWN CHURCH.

Words and Music by WM. S. PITTS.

*Moderato.*

*ad lib.* *legato.* *pp*

The piano introduction consists of two staves. The right hand features a melodic line with a trill-like figure in the first measure, followed by a series of eighth notes. The left hand provides a harmonic accompaniment with chords and single notes. The tempo is marked 'Moderato' and the dynamics include 'ad lib.', 'legato.', and 'pp'.

4. There, there by the side of that loved one, 'Neath the

The vocal line is written on a single staff in G major and 4/4 time. It begins with a rest for four measures, then enters with the melody for the first line of lyrics.

1. There's a church in the val - ley by the wild - wood, No  
 2. How sweet on a bright Sabbath morn - ing, To  
 3. There close by the church in the val - ley, Lies

The piano accompaniment for the first part of the lyrics consists of two staves. The right hand has a simple harmonic accompaniment with chords and single notes. The left hand provides a bass line with chords and single notes.

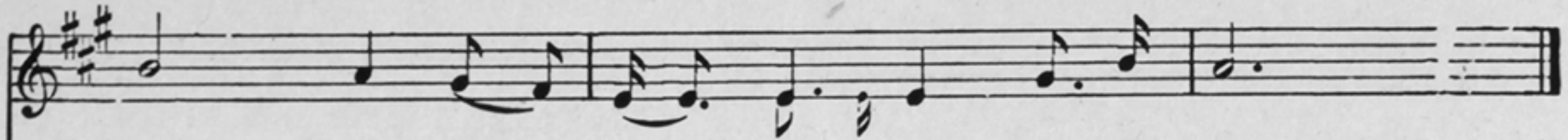
tree where the wild flow - ers bloom, Where the fare - well hymn shall be

The vocal line continues with the melody for the second part of the lyrics, written on a single staff.

lov - li - er place in the dale, No spot is so dear to my  
 list to the clear ring - ing bell, Its tones so sweet - ly are  
 one that I lov - ed so well, She sleeps, sweet - ly sleeps 'neath the

The piano accompaniment for the second part of the lyrics consists of two staves. The right hand has a simple harmonic accompaniment with chords and single notes. The left hand provides a bass line with chords and single notes.

chant . ed, I shall rest by her side in the tomb.

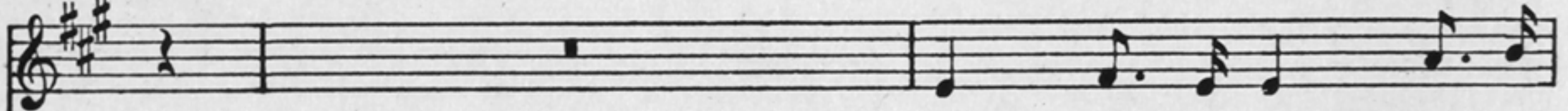


child hood, As the lit - tle brown church in the vale.  
call - ing, Oh come to the church in the vale.  
wil - low, Dis - turb not her rest in the vale.



**CHORUS:**

Air.



Come to the Church by the

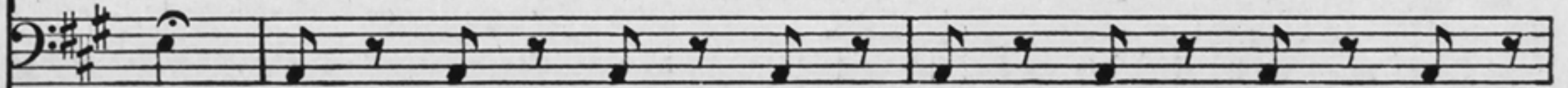
Alto.



Tenor.



Oh! come, come, come, come, come, come, come, come,



wild - wood, Oh, come to the church in the dale, No

come, come, come, come, come come, come, come, come, come, come, No

This system contains the first two lines of the musical score. It features a vocal line with lyrics and a piano accompaniment. The key signature has three sharps (F#, C#, G#) and the time signature is 3/4. The piano part consists of a steady eighth-note accompaniment in the right hand and a bass line in the left hand.

spot is so dear to my child - hood, As the lit - tle brown church in the vale.

spot is so dear to my child - hood, As the lit - tle brown church in the vale.

This system contains the second two lines of the musical score. It features a vocal line with lyrics and a piano accompaniment. The key signature has three sharps (F#, C#, G#) and the time signature is 3/4. The piano part continues with the same accompaniment pattern as the first system.

# SONGS THAT HAVE "CAUGHT ON."

**HIDE BEHIND THE DOOR WHEN PAPA COMES.** Song and Refrain. By Collin Coe. Price 35 cents.

1. When the little stars are twinkling, at the close of day, And ev'ry-body's coming home to rest; When the evening lamp is burning, and the merry children play,  
2. Oh, the little curl-y heads that hide away from you! Together whisp'ring there behind the door! How you'd miss them, if forever they should si-lent be.

Copyright, MDCCCXCII, by Oliver Ditson Company.

**PRETTY NELLIE DOLAN.** Song and Refrain.

Words by C. B. Perkins. Music by Harry J. Ballou. Price 40 cents.

1. Oh, Far-mer Do-lan has a farm, 'tis just out-side the town, . . . And a pret-ty daugh-ter Nel-lie, who's the pride of  
2. Her fa-ther in the door-way wide sits rest-ing from the day, . . . With his well-browned pipe be-tween his lips, his cares all  
3. The well-kept build-ings clus-ter round, the low-ing kine are there, . . . And the fra-grance of the new-mown hay is float-ing

Copyright, MDCCCXCII, by Oliver Ditson Company. Copyright secured in England.

**LOVING EYES OF VIOLET BLUE.**

J. C. Macy. Price 50 cents.

1. Lov-ing eyes of vio-let blue, Hope and joy I see in you! And you shine like drops of dew, Like the  
2. Though I wan-der far a-way, Tho' I roam for many a day, From your light I can-not stray, From your  
3. Gen-tle eyes that I love well, Speak-ing more than tongue can tell, I would lin-ger 'neath thy spell, Ev-er

Copyright, MDCCCXCII, by Oliver Ditson Company.

**BIRDLING, WHERE HAVE YOU FLOWN?** Waltz Song.

Words by J. Barker. Music by Edward Holst. Price 40 cents.

*Moderato.*

Lit-tle bird, come back to your nest, Come and rest 'neath thy moth-er's breast. Ah, . . . . .

Copyright, MDCCCXCII, by Oliver Ditson Company. Copyright secured in England.

**LULLABY, MY DARLINGS.** Song and Refrain.

Words by Wm. H. Gardner. Music by Harry J. Ballou. Price 40 cents.

1. The lights are lit a-cross the hall; I hear the chil-dren's moth-er call, "Oh, come, each lit-tle sleep-y head, It's  
2. Each lit-tle head is bur-ied deep With-in the spell of gen-tle sleep; Each spark-ling eye and smil-ing face Seems  
3. Then down the stairs she soft-ly goes, Still think-ing of each dar-ling rose; She whis-pers "Pa-pa, come and see Our

Copyright, MDCCCXC, by Oliver Ditson Company.