

TEN COMMANDMENT BLUES

B6579
38

WORDS AND MUSIC
by
JAMES KING



SPENCER WILLIAMS MUSIC CO., INC.
GAIETY THEATRE BLD'G
1547 BROADWAY NEW YORK CITY

TRY THIS ON YOUR PIANO

2 WILLIAMS LOW-DOWN SERIES No. 7

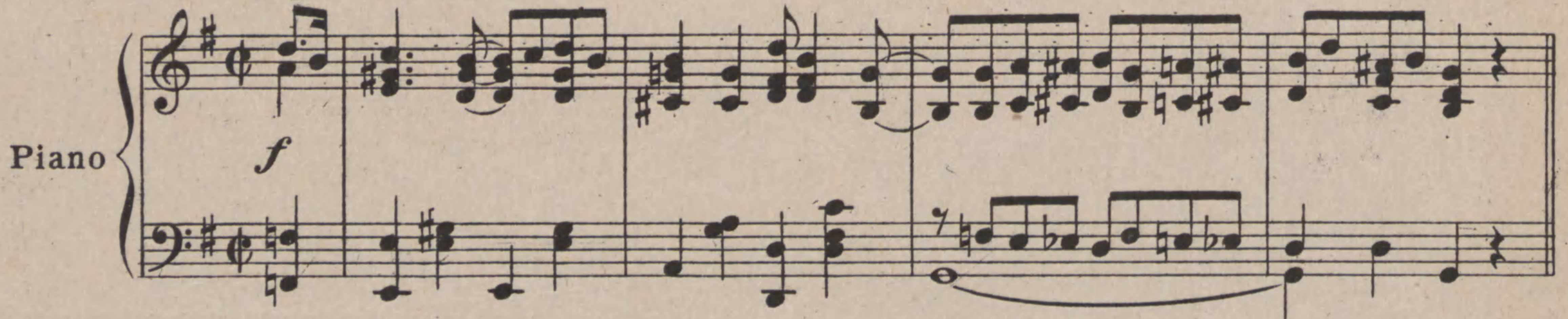
I'm A Good Gal But I'm A Thousan' Miles From Home

By SPENCER WILLIAMS

Writer of { Messin' Round
Low Down Papa
Cotton Belt Blues etc.

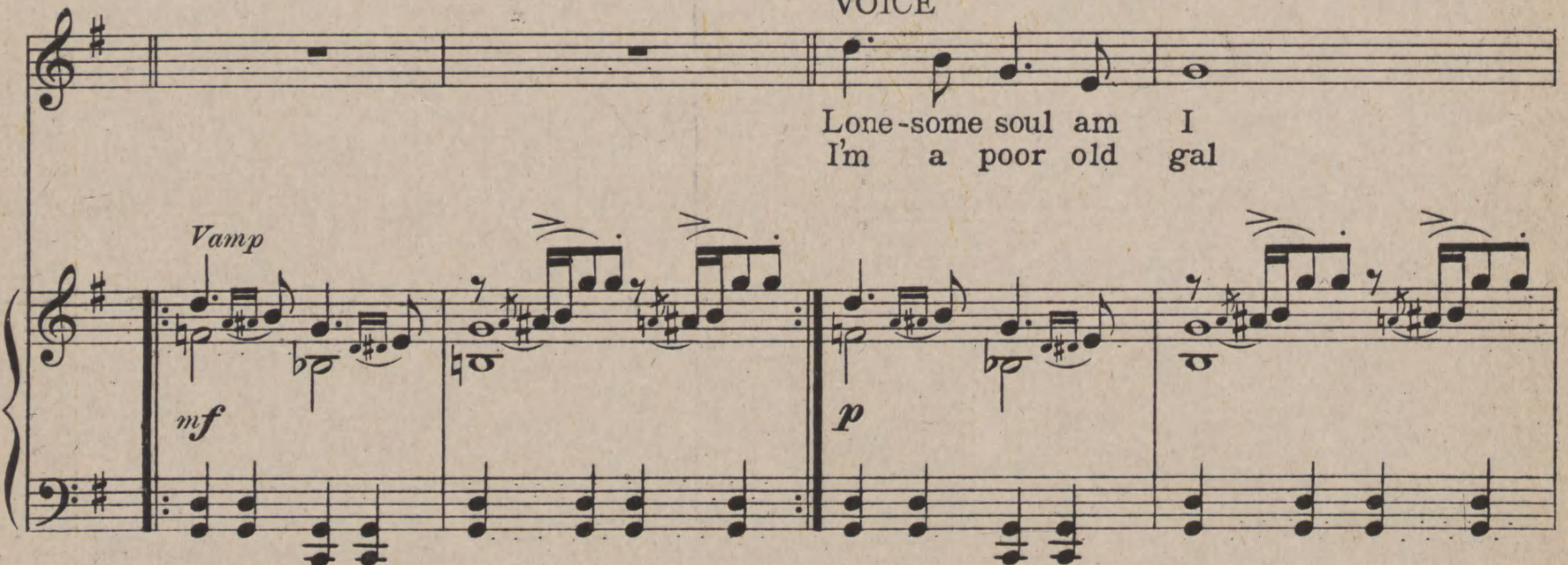
Tempo di N'awlins

Piano



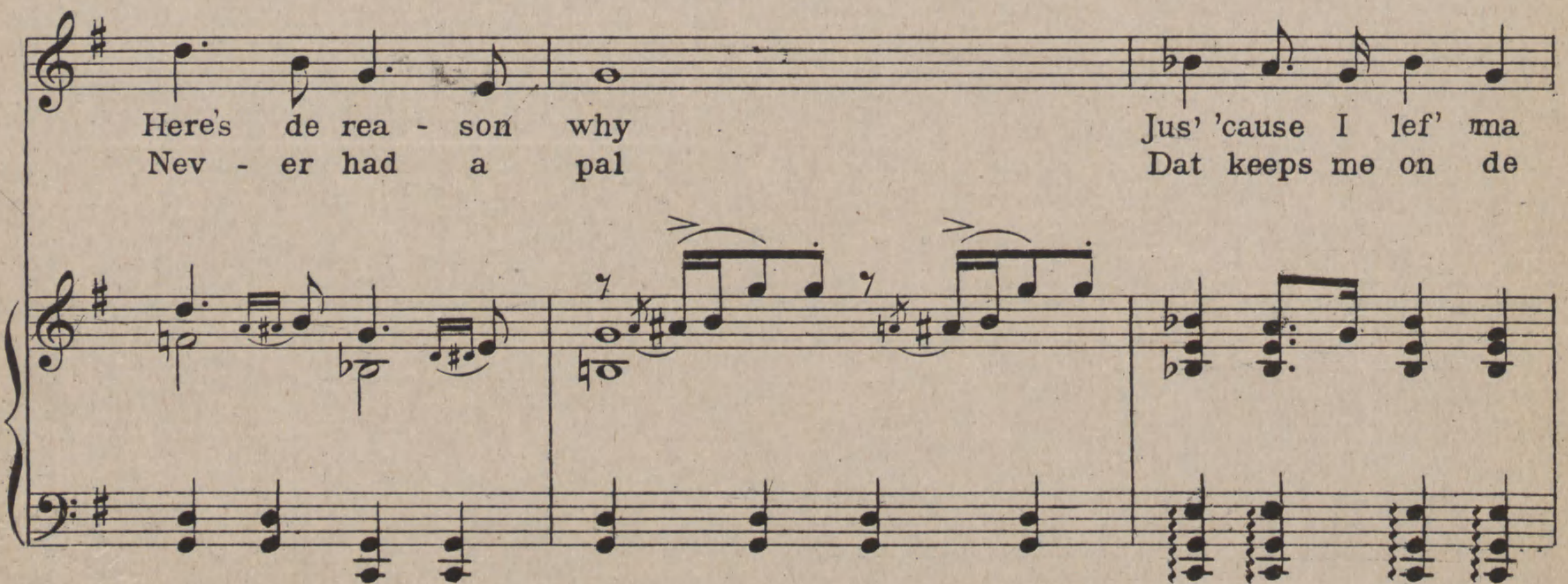
f

VOICE



Lone-some soul am I
I'm a poor old gal

Vamp
mf *p*



Here's de rea-son why Jus' 'cause I lef' ma
Nev-er had a pal Dat keeps me on de

Copyright MCMXXIII by Spencer Williams Music Co. Inc. Gaiety Thea. Bldg, 1547 B'way, N.Y.
International Copyright Secured Room 504 All Rights Reserved

For sale by all Music Dealers

The Ten Commandment Blues

3

(Ev'rybody's Sorrow Song)

Lyric by
ARTHUR GLENDALE

Music by
JAMES KING

Tempo di Doleful

Piano

f *dim. e cresc.*

The piano introduction consists of two staves. The right hand starts with a series of chords and eighth notes, while the left hand provides a steady bass line. The piece begins with a forte (*f*) dynamic and concludes with a *dim. e cresc.* marking.

We all have our troubles, O-ver things we can't do;
Now may-be you think that I should nev-er com-plain,

The first line of lyrics is accompanied by a piano accompaniment. The right hand features a melody with eighth notes and chords, while the left hand plays a simple bass line. The dynamic is marked *p*.

Life's so full of prob-blems, That make me feel blue.
Some folks have their wor-ries, That drive them in-sane.

The second line of lyrics is accompanied by a piano accompaniment. The right hand features a melody with eighth notes and chords, while the left hand plays a simple bass line.

My soul is so dole-ful, So I'm ask-ing you
But all of these shalt-nots They give me a pain,

The third line of lyrics is accompanied by a piano accompaniment. The right hand features a melody with eighth notes and chords, while the left hand plays a simple bass line.

Now do you much blame me If I feel as I do. —
 I'm so reg-u - lat - ed, That I sing this re - frain. —

CHORUS

I got the ten, — I got the ten, — I got the ten com-mand-ment

Blues, I'm down and out and have no doubt the rea-son is — I have too man-y don'ts to

wor-ry a - bout I'd like to do — a thing or two — But

try and find some fun that ain't ta - boo, Thou shalt not steal or

kill, or cov-et, Thou shalt not (M-m-m) but gosh, how I love it That mel-o-dy
(Hum)

haunts me, I know yield-ing is sin, I got the ten, I got the

ten, I got the ten com-mand-ment Blues. I got the Blues.

THIS
MEMBER
can
be had
for your
phonograph
or your
layer-
piano

LATEST BROADWAY BLUES

MAY BE HAD FOR
PIANO, PIANO PLAYER, OR TALKING MACHINE

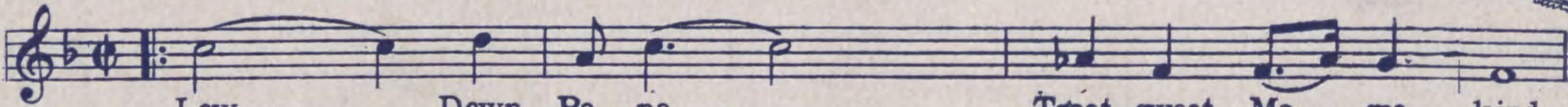
YOU'RE ALWAYS MESSIN' 'ROUND WITH MY MAN



You're al - ways mess - in' 'round with my man, _____



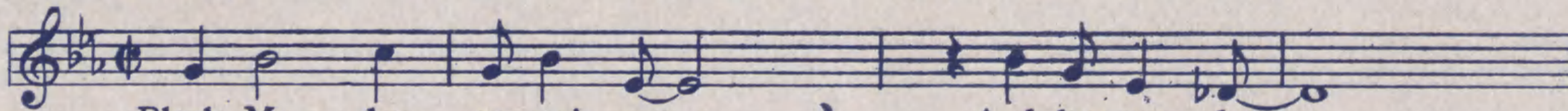
LOW-DOWN PAPA



Low _____ Down Pa - pa, _____ Treat sweet Ma - ma kind,



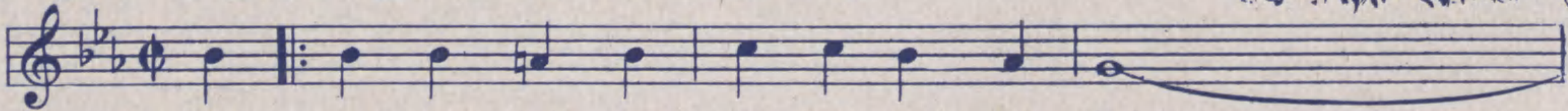
BLACK MAN (BE ON YO' WAY)



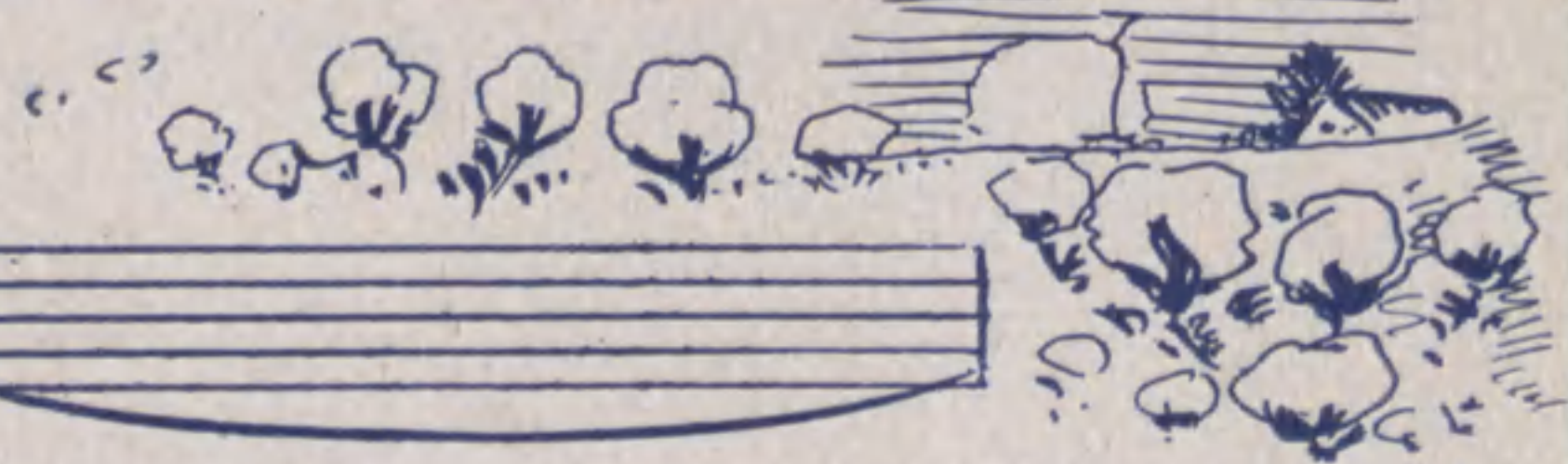
Black Man, be on yo' way _____ And lem-me be, _____



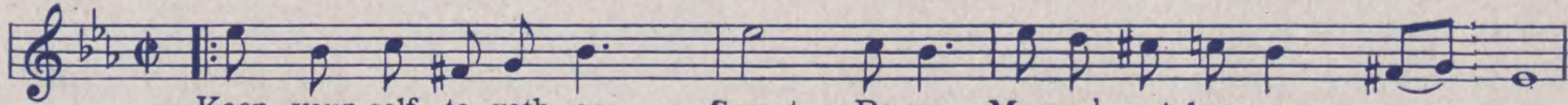
COTTON BELT BLUES



1. Dat man has left me in an aw - ful hole, _____



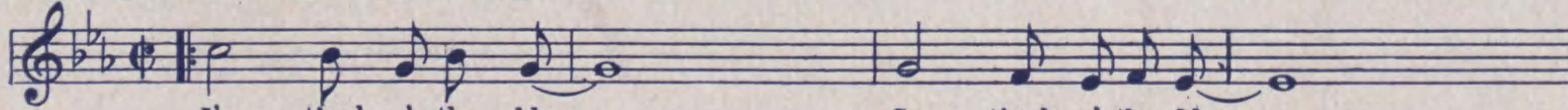
KEEP YOURSELF TOGETHER SWEET PAPA



Keep your-self to-geth-er, Sweet Pa-pa, Ma-ma's got her eyes on you.



TIRED O' THE BLUES



I'm tired o' the blues, So tired o' the blues,



SPENCER WILLIAMS

MUSIC COMPANY INC.

1547 BROADWAY

NEW YORK

ALL EQUALLY AS GOOD AS THOSE YOU HAVE
HEARD LIZZIE MILES SING ON THE RECORDS *a.o.o.*