

IRRESISTIBLE BLUES

WORDS AND MUSIC BY
GEO. E. JEFFERSON



CLARENCE WILLIAMS
MUSIC PUBLISHING CO., INC.
1547 BROADWAY, NEW YORK

MADE IN
U.S.A.

TRY THIS SONG ON YOUR PIANO

Play 'Em For Mamma Sing 'Em For Me Blues

Words and Music by
CLARENCE WILLIAMS

Chorus

Play 'em for ma - ma, Sing 'em for me, I'm wild a - bout that

pf

blue mel - o - dy. I love you dad - dy good and strong

That's right Pa - pa syn - co - pate me all night long, That mel - o - dy will
Play 'em for your ba - by 'til the cows come home,

Copyright MCMXXIII by Clarence Williams Music Pub. Co. Inc. 1547 B'way, N.Y.
International Copyright Secured. Made in U. S. A. All Rights Reserved.

COPIES ON SALE WHEREVER MUSIC IS SOLD

Irresistible Blues

Words & Music by
GEO. E. JEFFERSON

Slowly

ben marcato

VAMP

p

The piano introduction is in 7/8 time, marked 'Slowly' and 'ben marcato'. It features a complex rhythmic pattern with eighth and sixteenth notes. The right hand has a melodic line with some triplets, while the left hand provides a steady bass accompaniment. The piece concludes with a 'VAMP' section, marked 'p' (piano), consisting of a few chords in the right hand and a simple bass line in the left hand.

VOICE

In old "Miss"the Del - ta is the place you ought to go. Tom-mie Lee
When you hear your good man say he's goin' a - way to stay, Tell him if he

The vocal line is in 7/8 time, starting with a quarter note followed by eighth notes. The piano accompaniment is in 7/8 time, with a steady bass line and chords in the right hand.

Les-ter, Lawd, sure pulls some vi-'lin bow. When he plays Dol - ly sways and
don't come back, you think he's gone a day, 'Cause where he won't an - oth - er will be

The vocal line continues with a similar rhythmic pattern. The piano accompaniment provides harmonic support with chords and a consistent bass line.

vamps a - bout the floor. So one night at the hall the "Big Six Band" played jazz,
might-y glad to stay. So when you leave take all your old rags ev-'ry-thing you had,

The vocal line concludes the verse. The piano accompaniment ends with a final chord in the right hand and a bass line in the left hand.

All the Browns all'round town came out in all they had, Dol-ly asked what it was that
 Leave a piece 'round me dear might make me feel so bad, When you think of what you've done it

made her feel so sad, Tom-mie Lee then stood right up and with a smile he said:
 ought to make you sad, Then you'll hear me sing these blues, blues you can't re-sist.

CHORUS

Oh! it's that tan-ta-li-zin', hyp-no-ti-zin', ag-gra-va-tin', ir-re-sist-in' strain..

Treble Clef 8va higher second time

Play it a-gain, oh play it a-gain, For ev-'ry time I think of the one who stole from me the beau-ti-ful sun, And

left my life in dark-ness and in pain, It makes me lone-ly,

'Cause I want on - ly you. But there will

come a time some-day, When you will want my love and I'll be far a-way.

Ba-by O' mine you used to be mine, This way you've got of treat-ing me, Lawd, Sure is com-ing home to you hard, The

good book says you reap just what you sow, You can't re-sist it

the ir-re-sist-i-ble blues. Oh! it's that

HIS
 MBER
 can
 e had
 your
 nograph
 your
 ayer-
 iano

LATEST BROADWAY SUCCESSES

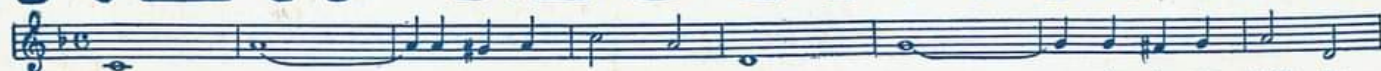
MAY BE HAD FOR
PIANO, PIANO PLAYER, OR TALKING MACHINE

ROUMANIA FOX-TROT



My sweet dark-eyed maid-en My heart's heav-y lad-en I'm blue

NEW MOON FOX-TROT



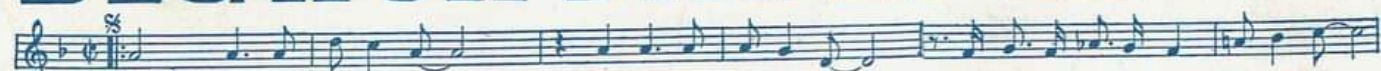
New moon why do you haunt me new moon why do you taunt me

IF YOU DON'T BELIEVE I LOVE YOU, SEE WHAT A FOOL I'VE BEEN BLUES



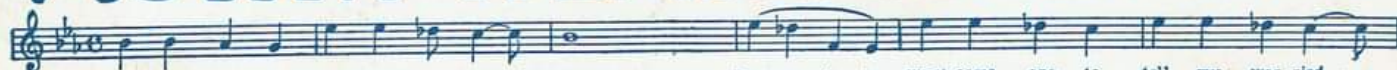
If you don't be-lieve I love you Look what a fool I've been If you don't think I fell for you

DECATUR STREET BLUES



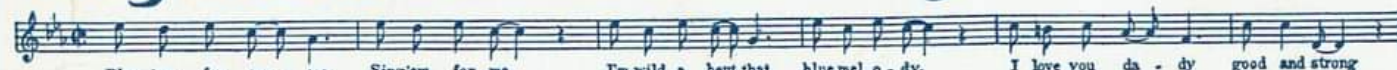
Down on De-ca-tur Street I mean it can't be beat You'll see some pret-ty Browns, Yel-lows too

ACHIN' HEARTED BLUES



Got those dog-gone Ach-in' heart-ed blues Bout my ba-by want some one to tell my wor-ried

Play 'Em For Mama and Sing 'Em For Me BLUES



Play 'em for ma-ma Sing 'em for me. I'm wild a bout that blue me-lo-dy. I love you da-dy good and strong

CLARENCE WILLIAMS
MUSIC PUBLISHING CO. INC.
1547 BROADWAY NEW YORK

ALL EQUALLY AS GOOD AS THOSE YOU HAVE
HEARD CLARENCE WILLIAMS SING ON THE RECORDS