

PROFESSIONAL COPY COTTON BELT BLUES

(Mamma's Sorrow Song)

By SPENCER WILLIAMS

Writer of { Always Messin' 'Round
Low-Down Papa
Black Man etc.

"Tempo di Jig-walk"

Piano

The piano introduction consists of two staves. The right hand features a rhythmic melody with eighth and sixteenth notes, while the left hand provides a steady accompaniment with chords and single notes. The key signature is two flats (B-flat and E-flat), and the time signature is 2/4.

VOICE

The voice line begins with a rest, followed by the lyrics "Look at me, look at me, And you'll". The melody is simple and follows the natural inflection of the words.

Look at me, look at me, And you'll

Vamp

The piano vamp section is marked with a repeat sign and includes dynamics *mf* and *p*. It features a rhythmic pattern of eighth notes in the right hand and chords in the left hand.

The voice line continues with the lyrics "see a gal, With a heart bowed down with woe, Be-cause I'm". The piano accompaniment continues with the same rhythmic pattern as the vamp section.

see a gal, With a heart bowed down with woe, Be-cause I'm

The voice line concludes with the lyrics "all a-lone, Far from my South-ern home, Dix-ie". The piano accompaniment continues with the same rhythmic pattern.

all a-lone, Far from my South-ern home, Dix-ie

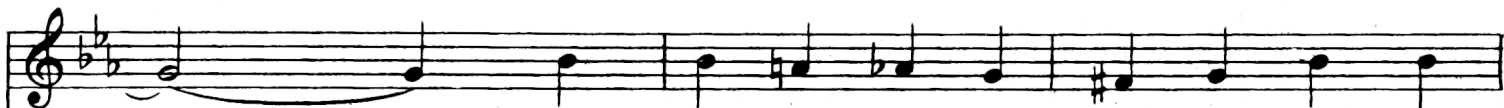
Dan, dat's de man took me from de land of cot-ton to de cold, cold mind-ed North, _____ Den

threw me down, Skipped dis town And I ain't nev-er seen him hence-forth.

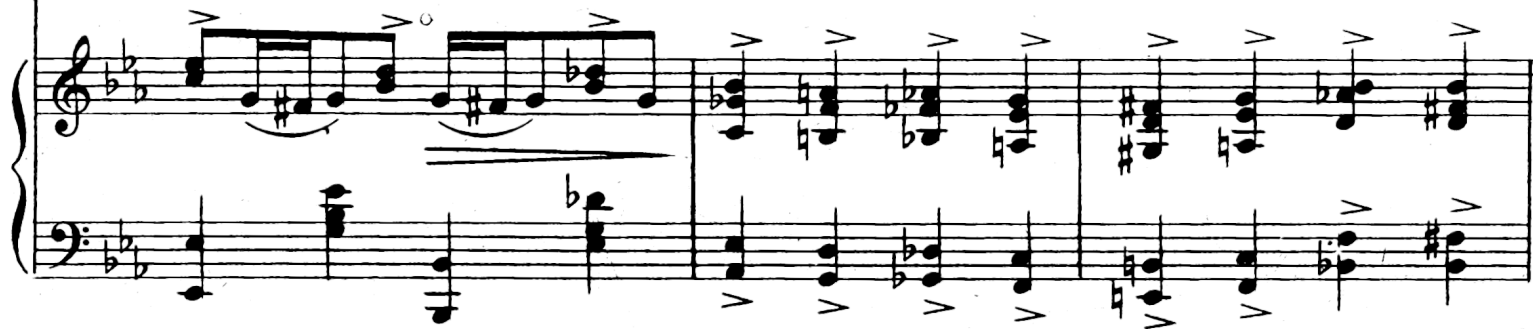
Jus' cause I trust-ed, I'm broke and dis-gust-ed, I got de Cot-ton Belt Blues. _____

CHORUS

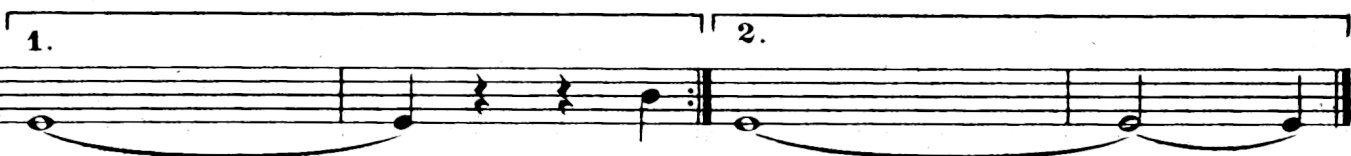
1. Dat man has left me in an aw-ful hole, _____
 you see what a nast-y muddle I'm in, _____
 I knew jus' where dat rap-scal-ion went, _____
 trif-lin' man was us' a pleas-ure hound, _____
 Cot-ton Belt is call-in' me right now, _____



I say he left me in a low-down
 Can't you see what a mud-dle Ma-ma's
 If I knew jus' where dat rap-sal-ion
 Dat trif-lin' man was jus' a pleas-ure
 Dat Cot-ton Belt is call-in' me right



hole, _____ De day I catch him Ma-ma's gon-na ruin his
 in, _____ When my shoes wear out I'll be on my feet a-
 went, _____ I'd find de sher-iff put de blood-hounds on his
 hound, _____ When dey mess with me ma-ma kicks their dog-house
 now, _____ I'll ride de rods and get my-self back home some-



soul. _____

gain. _____

scent. _____

down. _____

how. _____

2. Can't

3. If

4. Dat

5. Dat

soul. _____

gain. _____

scent. _____

down. _____

how. _____

