

# WITHOUT A SONG

Words by WILLIAM ROSE and EDWARD ELISCU  
Music by VINCENT YOUMANS

Slowly  
♩ = 80

**E7**  


**A<sup>b</sup>7** 4fr  


**C7#5** 8fr  


*mf*

With- out a song the day would nev - er end; with- out a

**Fmaj<sup>7</sup>**  


**B<sup>b</sup>maj<sup>7</sup>/F**  


song the road would nev - er bend; when things go wrong a man ain't

**Fmaj<sup>7</sup>**  


**B<sup>b</sup>**  

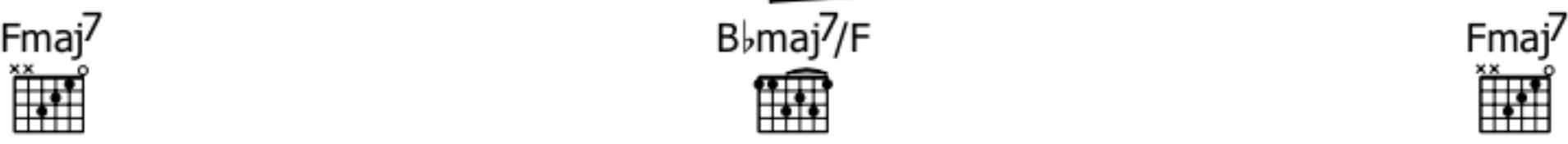

**F/C**  



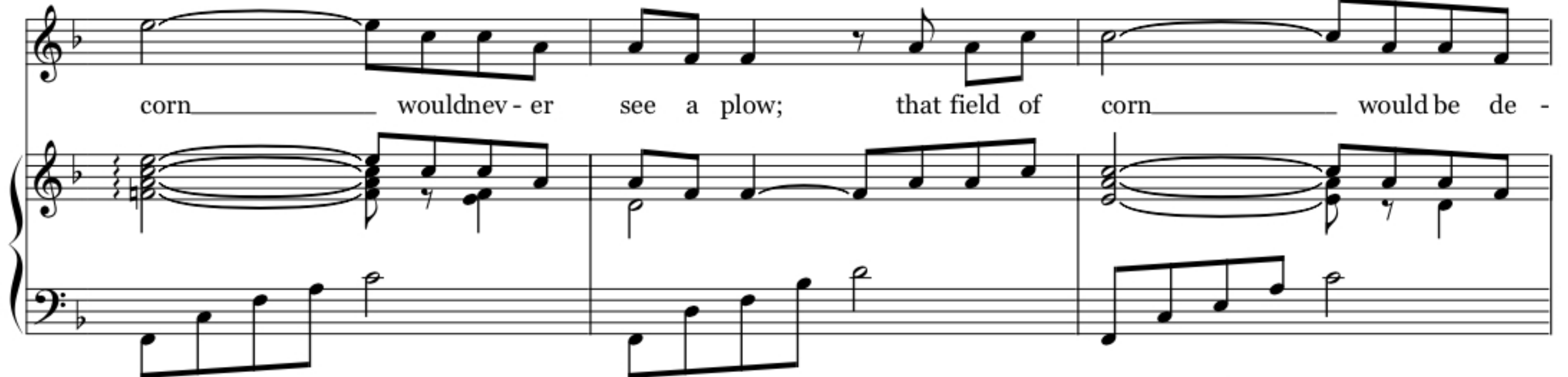


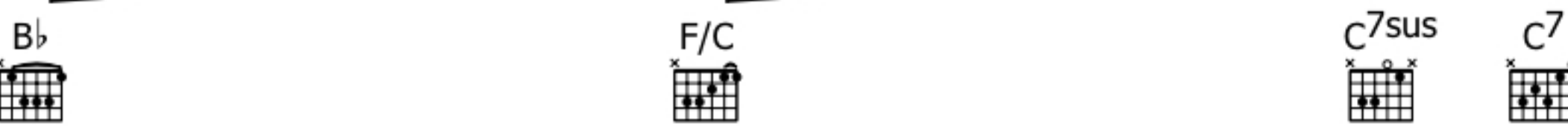

got a friend, — with- out a song. That field of







corn — wouldnev - er see a plow; that field of corn — would be de -






-sert - ed now; a man is born, — but he's no good no how, — with- out a





song. I got my trou - ble and woe, but



F7 Bb F7 Bb C F

sure as I know the Jor - dan will roll.

Am E7 Am7 D7 C G7 C F C9

I'll get a - long as long as a song is strong in my soul.

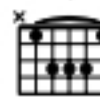
C7 C7#5 8fr Fmaj7 Bbmaj7/F

I'll nev - er know what makes the rain to fall; I'll nev - er

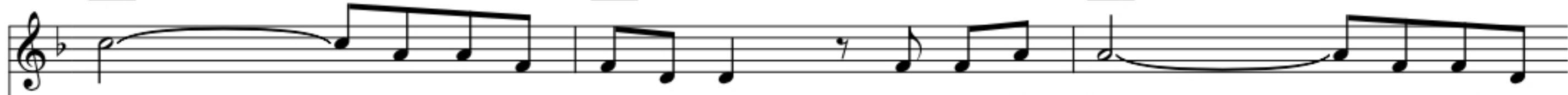
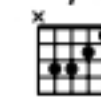
Fmaj7



Bb



F/C



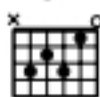
know \_\_\_\_\_ whatmakesthe grass so tall; I on - ly know \_\_\_\_\_ thereain't no



C7sus



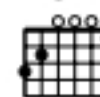
C7



F



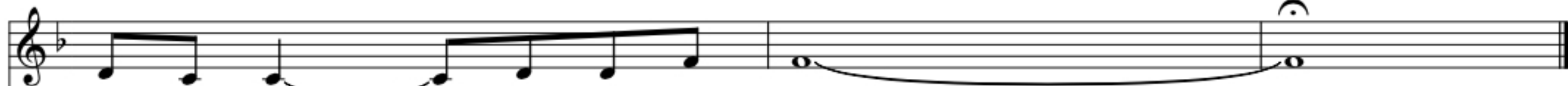
G7



Bbm



F



love at all \_\_\_\_\_ with - out a song \_\_\_\_\_

