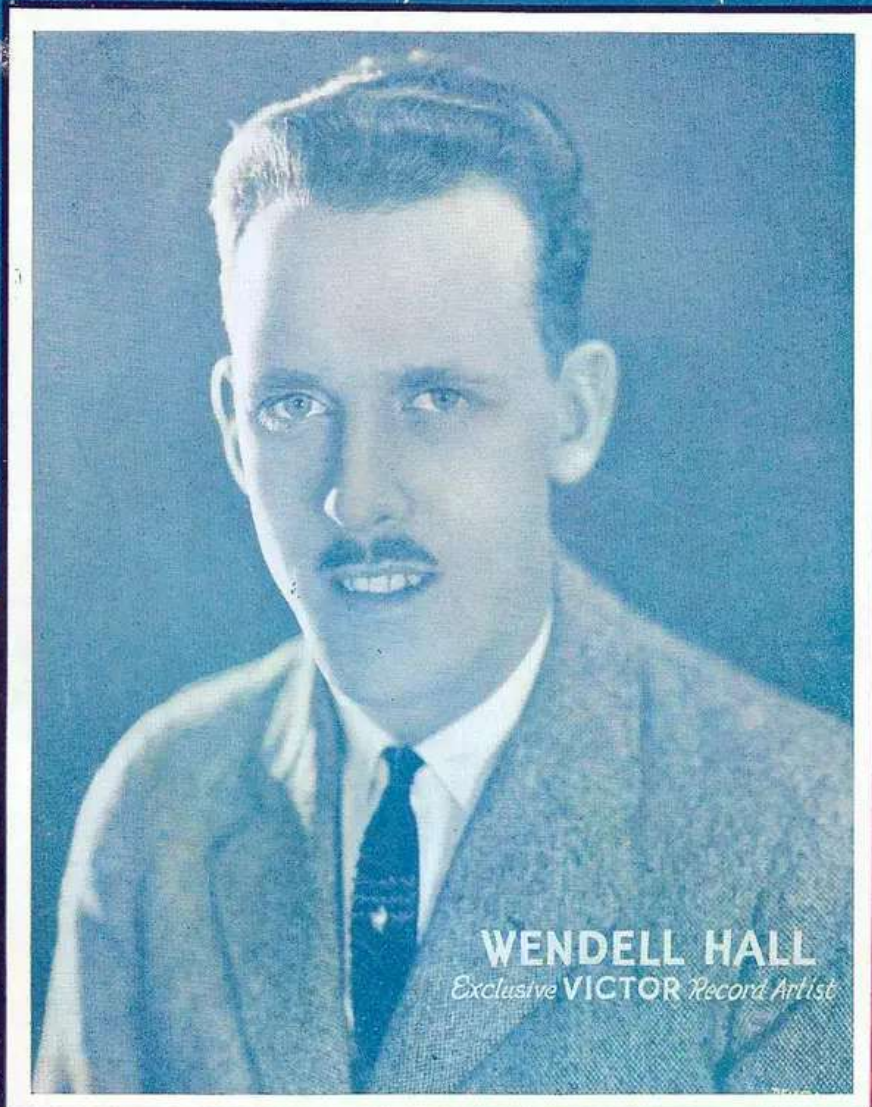


# Whistlin' The Blues Away

by **WENDELL HALL**  
& **CARSON ROBISON**



**WENDELL HALL**  
*Exclusive VICTOR Record Artist*

**DELLWOODS MUSIC HOUSE**  
Publishers — Dealers  
4211 N. Hermitage Ave.  
CHICAGO  
Illinois  
"Hall Songs—Hall Hits"

This number sung  
by the composers  
on Victor Record  
No. 19338.

PRINTED IN U.S.A.

# Whistlin' The Blues Away

By WENDELL W. HALL  
& CARSON J. ROBISON

Not Fast

The piano introduction consists of two staves. The right hand features a melodic line with eighth and sixteenth notes, while the left hand provides a steady accompaniment with chords and single notes. The tempo is marked 'Not Fast' and the dynamic is 'f'.

*mf*

When the wear-y blues come steal-in' 'round,  
It's a long old road that does-n't turn,

The vocal line begins with a rest followed by the lyrics. The piano accompaniment continues with chords and moving lines in both hands. Dynamics include 'mf' and 'f'.

And all your dreams come tum-bl-in' down, Don't think that  
And bye and bye you're go-in' to learn, That hard luck

The vocal line continues with the lyrics. The piano accompaniment provides harmonic support. Dynamics include 'mf'.

life is all in vain. You'll find a  
nev-er comes to stay. You may be

The vocal line concludes with the lyrics. The piano accompaniment features a melodic flourish in the right hand. Dynamics include 'mf'.

frown wont get you an - y - thing, But no one knows what  
down and out and all up - set, But try to smile and

smiles will bring, For sun - shine drives a - way the  
don't for - get — Your time is com - in' some sweet

rain. Just 'cause the  
day. When ev - ry -

skies are drear, don't start to sigh,  
thing you try — seems all in vain,

The sun - shine's ev - er near, And you will find it  
Don't sit a - round and sigh, But start right out and

bye and bye. So puck - er up and whist - le a tune,  
try a - gain. So puck - er up and whist - le a tune,

And you'll be find - in' ver - y soon You're whist - lin' the  
And you'll be find - in' ver - y soon You're whist - lin' the

blues a - way.  
blues a - way.

Whistlin' etc. 4

"IT AIN'T GONNA RAIN NO MO'" &amp; "MELLOW MOON"

## CHORUS

*Whistle gva ad lib*

*p-f*

Just whist - le long and low, and sweet and slow, and

cares will go a - way, So puck - er

up and smile, for life's worth while, when

blues are blown a - way. Just whist - le - way.

1 2