

KANSAS CITY KITTY

MUSIC BY
WALTER DONALDSON
WORDS BY
EDGAR LESLIE



WALTER DONALDSON
DONALDSON-DOUGLAS & GUMBLE, INC.
Music Publishers
1595 BROADWAY
NEW YORK.

MADE IN U.S.A.

TRY THESE OVER ON YOUR PIANO

A Little Town Called Home-Sweet Home

By WALTER DONALDSON

CHORUS

The musical score for 'A Little Town Called Home-Sweet Home' consists of a vocal line and a piano accompaniment. The vocal line is written in a single treble clef with a key signature of one flat (B-flat) and a common time signature. It features a chorus with lyrics: "I'll wan-der back to a white-shing-led shack in a lit-tle town called 'home - sweet - home!' I lost my". The piano accompaniment is written in grand staff (treble and bass clefs) with a key signature of one flat and a common time signature. It includes dynamic markings such as *p-f* and *ten.* (tension). Chord diagrams are provided above the vocal line and below the piano line.

Don't Remind Me (I'm Trying To Forget)

By LEW POLLACK
& SIDNEY CLARE

CHORUS

The musical score for 'Don't Remind Me (I'm Trying To Forget)' consists of a vocal line and a piano accompaniment. The vocal line is written in a single treble clef with a key signature of two flats (B-flat and E-flat) and a common time signature. It features a chorus with lyrics: "I'm try-ing to for-get Our love came to an end so if you are my friend Don't re - mind me. I'm try-ing to for-get". The piano accompaniment is written in grand staff (treble and bass clefs) with a key signature of two flats and a common time signature. It includes dynamic markings such as *p-f a tempo* and *ten.* (tension). Chord diagrams are provided above the vocal line and below the piano line.

Copyright 1928 by DONALDSON, DOUGLAS & GUMBLE, INC., New York City
 International Copyright Secured Made in U.S.A. All Rights Reserved
 J. ALBERT & SON - 137 King Street, Sydney, Australia
 KEITH PROWSE & CO. LTD. 42-43 Poland Street, London, Eng.
 FRANCIS, DAY & HUNTER, 37 Leipzigerstr., Berlin, Germany
 PUBLICATIONS FRANCIS DAY - 30 Rue De L'echiquier - Paris, France

FOR SALE BY ALL DEALERS

Kansas City Kitty

Words by
EDGAR LESLIE

Tune-a-Uke
A D F# B

Music by
WALTER DONALDSON

Moderato

VOICE

Chi-ca-go
Chi-ca-go

Till ready

Char-lie was a good time Ro-me-o, He'd love a gal, then whis-per,
Char-lie's sing-ing "no more wed-ding bells," He's got a sore throat sing-ing,

"good - bye, cheer-i - o." Just like Na - po - leon, Love got Char-lie,
"no more ba - by yells." They wake the neigh-bors, when they start to

Handwritten guitar chords: D7, Am7, D7, B7, Em, D7

Copyright 1929 by DONALDSON, DOUGLAS & GUMBLE, INC., New York City
International Copyright Secured Made in U. S. A. All Rights Reserved
J. ALBERT & SON - 137 King Street, Sydney, Australia
KEITH PROWSE & CO. LTD. 42-43 Poland Street-London, England
FRANCIS, DAY & HUNTER, 37 Leipzigerstr, Berlin, Germany
PUBLICATIONS FRANCIS DAY 30 Rue De L'Echiquier - Paris, France
Copyrighted in South America by Harry Kosarin, Rio de Janeiro

E^m A⁷ D Bdim A⁷ D⁷

too, Here's how Chi-ca-go Charlie said he met his Wat-er-loo.—
 cry, And Char-lie has to pac-i-fy them with this lul-la-by.—

CHORUS

G C⁷ G C⁷

I left Fris-co Kate, Swing-in' on the Gold-en Gate, When
 I just played the chill, for the fam-ous Dia-mond Lil, When

G A⁷ D⁷ G A⁷ D⁷ G

Kan-sas Ci-ty Kit-ty smiled at me! I left Ma and
 Kan-sas Ci-ty Kit-ty smiled at me! Folks in New Ro-

C⁷ G C⁷ G A⁷ D⁷

Pa, out in O-ma-ha-ha ha, When Kan-sas Ci-ty Kit-ty smiled at
 chelle, Said, "he aint done right by Nell," Since Kan-sas Ci-ty Kit-ty smiled at

G *Gdim D7* *B7* *E7*

me! _____ She comes from Miss - ou - ri and she showed
 me! _____ I gave Geor-gia Brown my watch-case Sun -

A7 *D7*

me, Like a Tex - as steer she buf - fa - loed me;
 day, I gave Louis-ville Lou the "works" on Mon - day;

G *C7* *G* *C7* *G*

Ev -'ry Jim and Jack - Got the well known Hack-en - sack, When Kan-sas Ci-ty
 I passed up those Queens, Like you'd pass up Bos-ton Beans, When Kan-sas Ci-ty

A7 *D7* *G* *G7* *C* *C7* *D7* *G* *A7* *D7* *G*

Kit-ty smiled at me! _____
 Kit-ty smiled at me! _____

D. S.

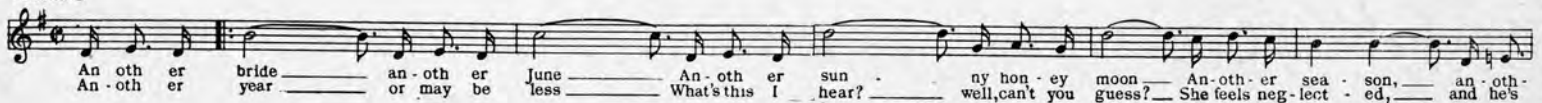
SUCCESSFUL SHOW SONGS
 FROM THE ZIEGFELD PRODUCTION
 OF
WHOOPEE
 WITH
EDDIE CANTOR

LYRICS BY **GUS KAHN**

MUSIC BY **WALTER DONALDSON**

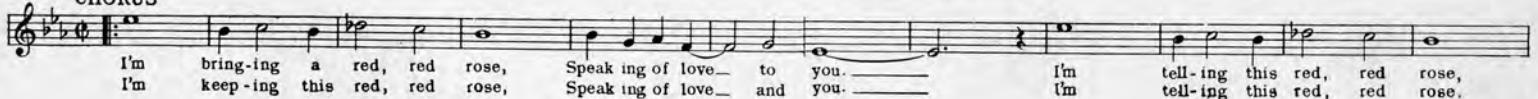
Makin' Whoopee!

CHORUS



I'm Bringing A Red-Red Rose

CHORUS



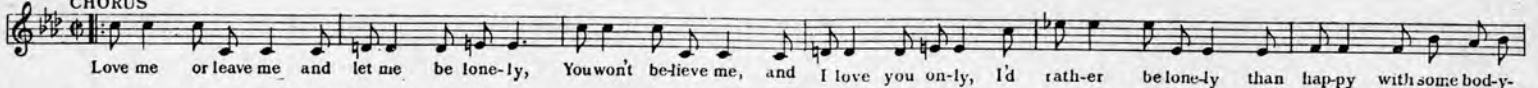
Until You Get Somebody Else

CHORUS



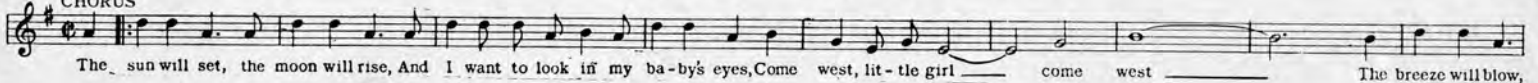
Love Me Or Leave Me

CHORUS



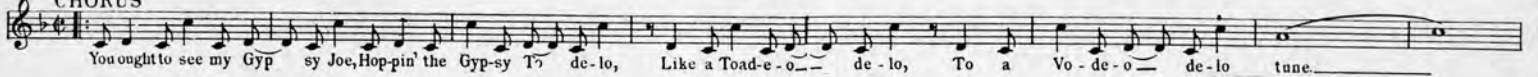
Come West, Little Girl, Come West

CHORUS



Gypsy Joe

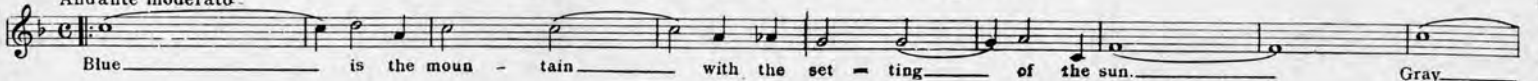
CHORUS



The Song Of The Setting Sun

REFRAIN

Andante moderato



ON SALE AT ALL MUSIC STORES



OR FROM PUBLISHERS DIRECT