

# I'll Always Be In Love With You

M9355  
861

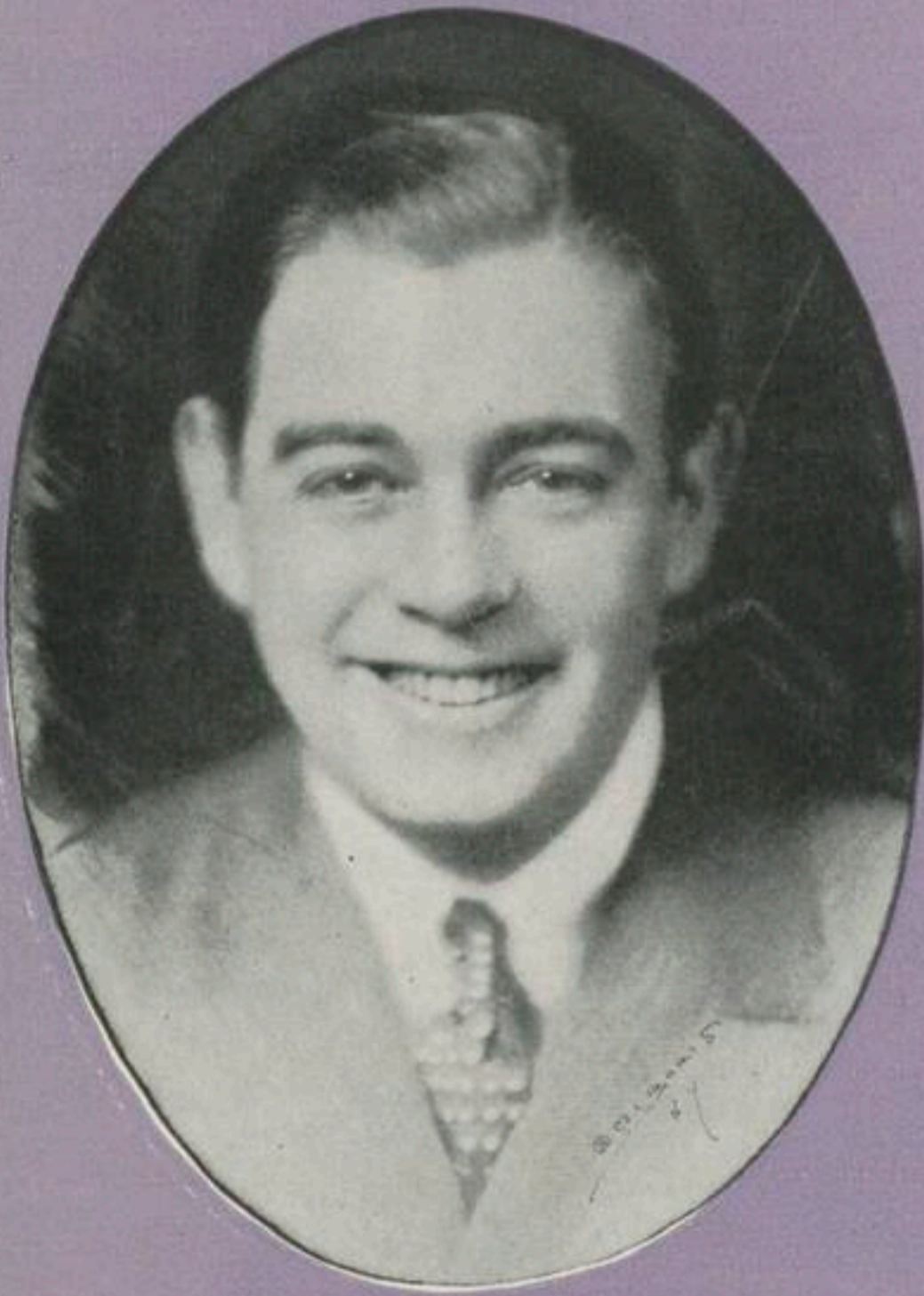
WORDS & MUSIC BY  
HERMAN RUBY  
— AND —  
GREEN AND STEPT



SENSATIONAL THEME SONG OF  
**SYNCOPIATION**

R.K.O. ALL TALKING MOTION PICTURE  
EXTRAVAGANZA

— STARRING —  
WARING'S PENNSYLVANIANS  
MORTON DOWNEY — BARBARA BENNETT  
BOBBY WATSON & DOROTHY LEE



SUNG ON THE SCREEN BY  
**MORTON DOWNEY**



PLAYED IN "SYNCOPIATION" BY  
WARING'S PENNSYLVANIANS

MADE  
IN  
U.S.A.

**GREEN & STEPT INC.**

745-7th AVE. NEW YORK CITY

# Try This On Your Piano

## Good Little Bad Little You

B $\flat$  Tuning  
F B $\flat$  D C

Words & Music by  
BUD GREEN &  
SAM H. STEPT

*Uke arr. by A. J. Franchini*

**Chorus**



Good lit - tle bad lit - tle you - hoo - oo, — What makes you

*mp - f*

tease like you do - hoo - oo? — I look in - to your an - gel

eyes, — They're lit - tle dev - ils in dis - guise; —

Copyright 1928 by Green & Stept Inc. Music Publishers, 745 Seventh Ave. N.Y.

International Copyright Secured.

All Rights Reserved.

Made in U. S. A.

**This Song May Be Obtained For Your Phonograph and Player Piano**  
**-Copies On Sale Wherever Music Is Sold-**

GREEN & STEPT INC.  
Music Publishers  
745 Seventh Ave. N.Y. City

# I'll Always Be In Love With You

Tune Ukulele

G C E A

Words and Music by  
HERMAN RUBY  
- and -  
GREEN and STEPT

## Valse Moderato

First system of piano introduction, marked *f*. It consists of two staves (treble and bass clef) with a 3/4 time signature. The music features a waltz-like melody in the right hand and a simple accompaniment in the left hand.

Second system of piano introduction, marked *Till ready* and *p*. It continues the waltz melody and accompaniment from the first system, ending with a repeat sign.

Voice

Dear - est I've loved you in vain, For it's so plain to  
Some - times when I'm all a - lone, I keep won - der - ing

First vocal phrase with piano accompaniment. The vocal line is on a single staff with guitar chord diagrams above it. The piano accompaniment is on two staves.

see, That you nev - er loved me. Sun - shine has turned in - to  
who, Is ro - manc - ing with you. How could I ev - er have

Second vocal phrase with piano accompaniment. The vocal line is on a single staff with guitar chord diagrams above it. The piano accompaniment is on two staves.

Copyright 1929 by Green & Stept Inc. 745 Seventh Ave. N.Y. City.

International Copyright Secured.

Made in U.S.A.

All Rights Reserved.

Campbell, Connelly & Co. 10 Denmark St. Charing Cross Road London W.C.2 England. | J. Albert & Son 137-139 King St. Sydney, Australia.

rain \_\_\_\_\_ And tho' all my glad-ness, has turned in - to sad-ness.  
 known \_\_\_\_\_ I'd be brok - en heart-ed, and now that we're part-ed.

**Chorus**

Sweet - heart, if you should stray, a mil - lion miles a - way I'll

*p-f*

al - ways be in love with you \_\_\_\_\_ And tho you find more

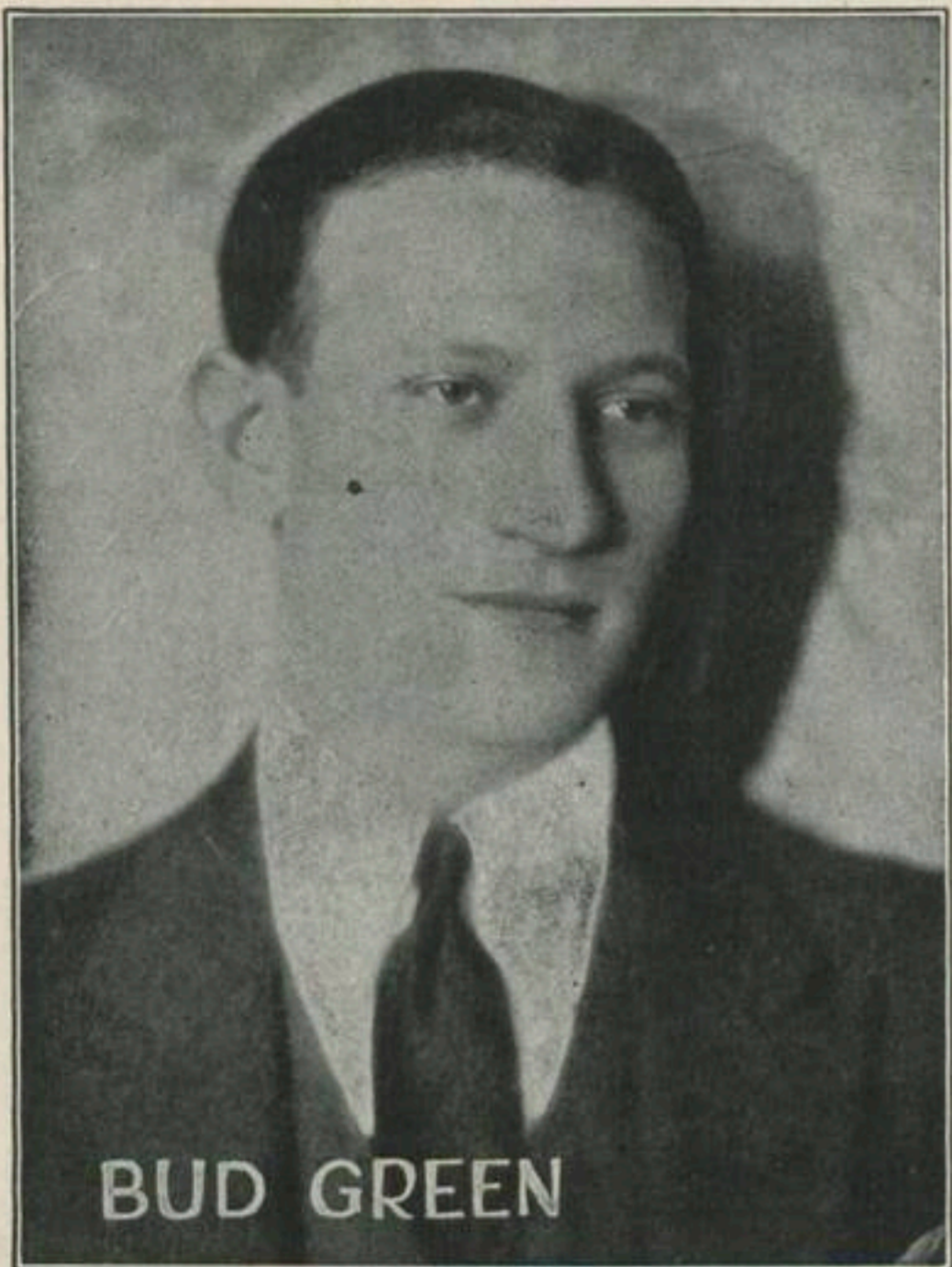
bliss, in some - one els-es kiss, I'll al - ways be in love with

you ————— I can't do an-y more, I've tried so hard to

please But let me thank you for, such ten - der mem-o - ries I

wish you hap-pi - ness, As for me, sweet-heart I guess, I'll al - ways be in

love with you. Sweet- you.



BUD GREEN

*Writer of*

"ALABAMA BOUND"

"OH BOY! WHAT A GIRL"

"I LOVE MY BABY"

"IN MY GONDOLA"

"YOU GOTTA KNOW HOW TO LOVE"

AWAY DOWN SOUTH  
IN HEAVEN

*Etc.*

*Writer of*

"WHEN SPRING COMES  
PEEPING THRU"

"I'M LOOKING FOR A  
GIRL NAMED MARY"

"MY SUNDAY GIRL"

"SHE'S MINE ALL MINE"

*Etc.*



SAM H. STEPT