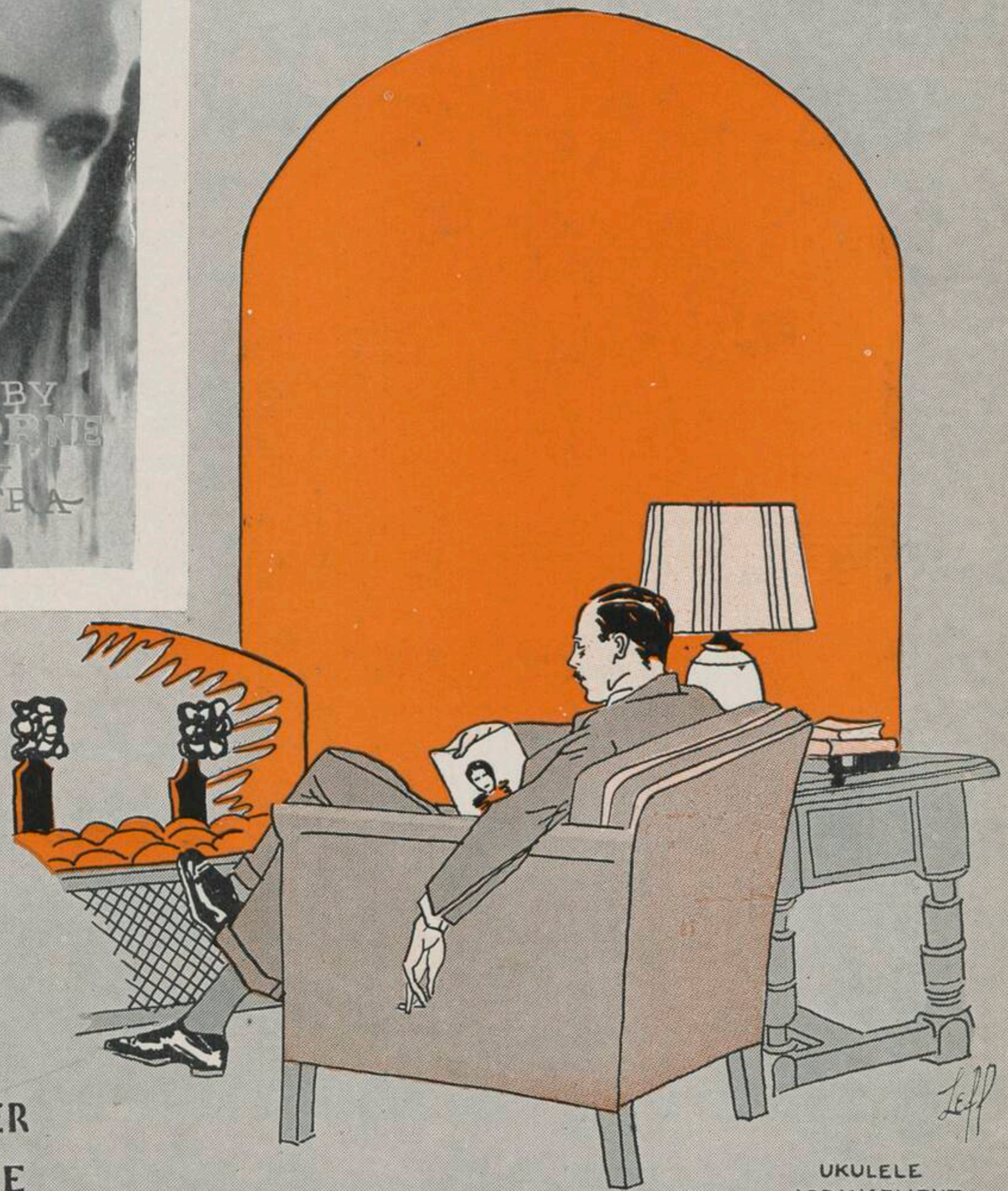
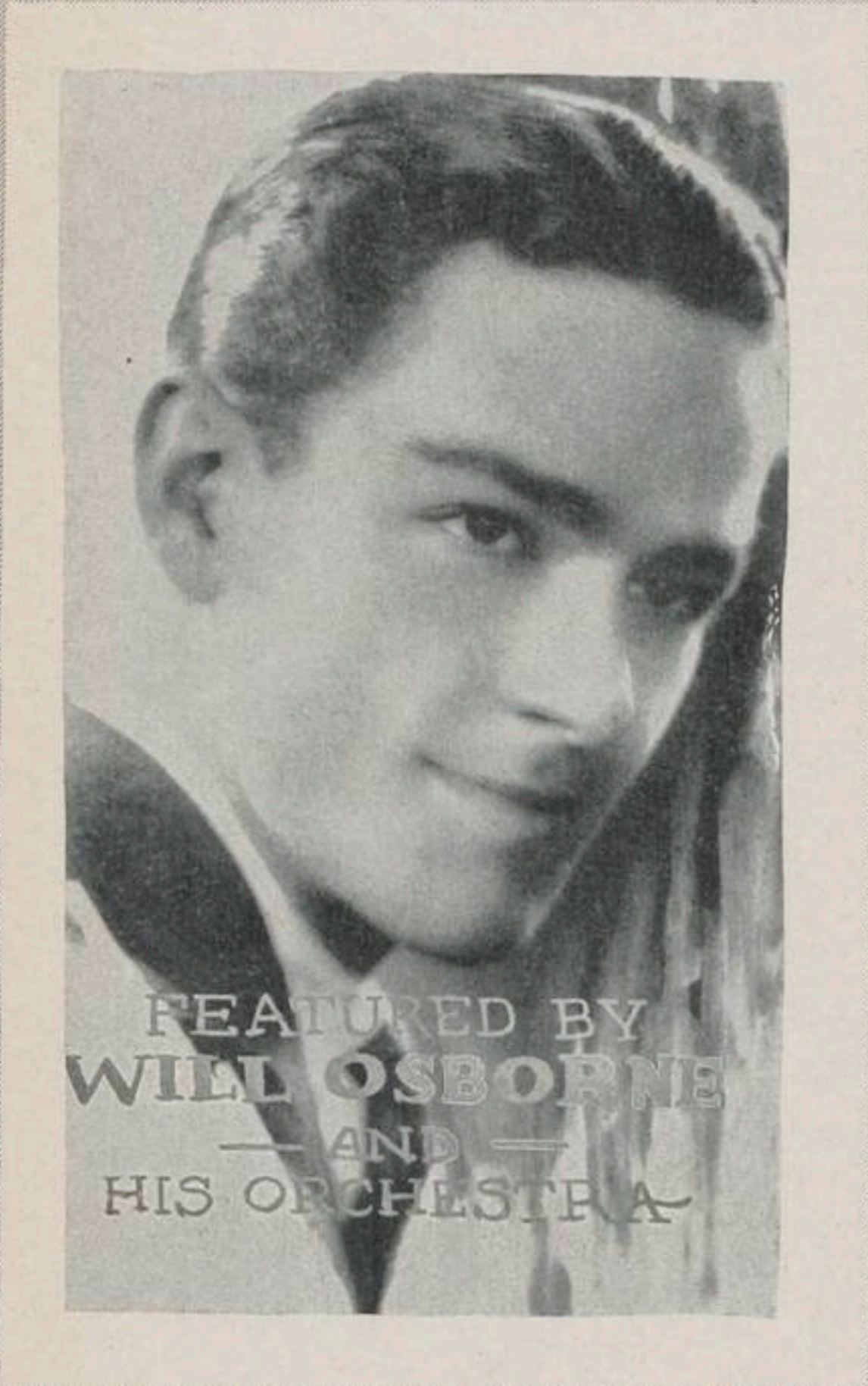


M6782  
1460

# BESIDE AN OPEN FIREPLACE



By  
**PAUL DENNIKER**  
and  
**WILL OSBORNE**

UKULELE  
ARRANGEMENT

**SANTLY BROS., INC.**  
MUSIC PUBLISHERS  
755-7<sup>th</sup> Avenue *Earl Carroll Theatre Bldg.* New York City  
SING SANTLY SONGS

ORDER CODE  
"FIREPLACE"

MADE IN  
U.S.A.

# TRY THIS ON YOUR PIANO

Ukulele Arr. by  
MAY SINGHI BREEN  
"The Ukulele Lady"

## Roamin' Thru The Roses

Lyric by  
CHARLES O'FLYNN

Tune Ukulele  
or Banjulele Banjo

Music by  
PETER DE ROSE

G C E A

### CHORUS

Roam-in' thru the ros-es down a road-way lead-ing to you, I'm

roam-in thru the ros-es, and bid-din'troub-les a - dieu. Happy, Oh so

hap-py, I'm ro - man-cing all of the while — For I know thru that win-dow, I'll

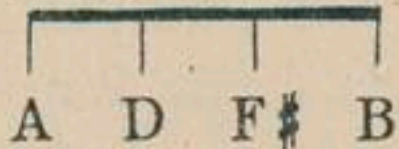
Ukulele Chords: Am<sup>i</sup>, F7, Am<sup>i</sup>, D7, Fm<sup>i</sup>, C, A7, Dm<sup>i</sup>, D7, G7, C, G7, Am<sup>i</sup>, F7, Am<sup>i</sup>, D7, Fm<sup>i</sup>, C, A7, Dm<sup>i</sup>

Copyright 1930 by SANTLY BROS. Inc., 755 Seventh Ave. New York City  
International Copyright Secured Made in U. S. A. All Rights Reserved  
Campbell Connelly & Co. 10-11 Denmark St. Charing Cross Road, London, W.C. 2, England

For Sale by all Music Dealers

# Beside An Open Fireplace

Tune Ukulele



Words & Music by  
PAUL DENNIKER  
& WILL OSBORNE

**Moderato**

Piano *f*

Voice



Na - ture is sleep - ing out in the gloom  
Dark - ness is fall - ing, stars light the sky

*Vamp*

*p*



Sha - dows are creep - ing in side my room Logs all a - glow in the  
Night birds are call - ing, night breez - es sigh Here all a - lone I am

fire - place there Lone - ly, I'm dream-ing in my old arm chair  
sad and blue . You would re - turn, dear, if you on - ly knew

Chorus

Be - side An O - pen Fire - place I

*p-f*

sit and dream of you In ev - 'ry

flame I see the face That time and space will

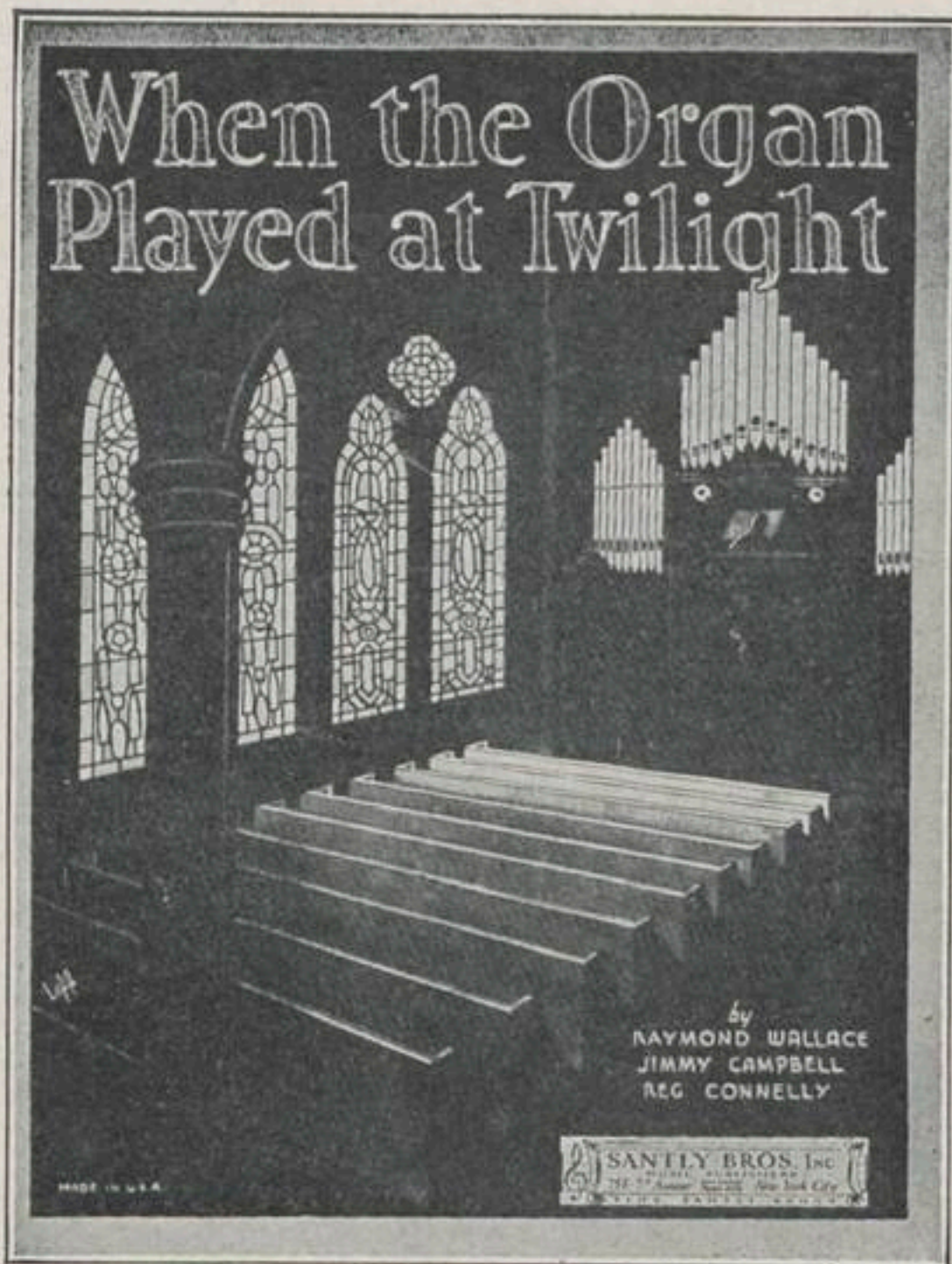
not e - rase \_\_\_\_\_ And when the cool ing em-bers die \_\_\_\_\_

Just as your love died too \_\_\_\_\_ There's

noth - ing in my fire - place \_\_\_\_\_ But brok - en

dreams of you. Be you. \_\_\_\_\_

**'SING SANTLY SONGS'**



**When The Organ Played At Twilight**

Lyric by  
RAYMOND WALLACE

Music by  
JIMMY CAMPBELL  
& REG. CONNELLY

CHORUS

When the or - gan playd at twi - light The song that  
reached my heart, It seemd to me I heard you  
sigh, Say "Au re - voir," but not "Good - bye," A -

Copyright MCMXXIX for all Countries by Campbell Connelly & Co., Ltd.  
10-11 Denmark St. Charing Cross Road, London W.C. 2 England  
Copyright for U.S. and Canada Assigned 1930 to SANTLY BROS. 755 Seventh Ave. New York City  
All Rights Reserved

**ROLLIN' DOWN THE RIVER**

Lyrics by  
R. STANLEY ADAMS

**Rollin' Down The River**

Music by  
THOMAS WALLER

CHORUS

Roll-in-down the riv-er, My wand-ying days are thru'  
Roll-in-down the riv-er, Just roll-in-home to you  
Morn-ing will de-liv-er, that part of dreams I know,

Copyright 1930 by SANTLY BROS. Inc., 755 Seventh Ave., New York City  
International Copyright Secured Made in U.S.A. All Rights Reserved

Lyric by  
R. STANLEY ADAMS  
Music by  
THOS. WALLER

Featured in  
CONNIE'S REVUE  
"SPADES ARE TRUMP"

SANTLY BROS. Inc.  
755 SEVENTH AVENUE, NEW YORK CITY

**OTHER SANTLY SONGS FOR YOUR ENJOYMENT**

- LONELY TROUBADOUR—By John Kir...
- FINESSE—By Bernard Maltin and Ray Doll
- DANCING DOMINOES—By Joe Zimmerman
- BESIDE AN OPEN FIREPLACE—By Paul Denniker and Will Osborne.
- ZONKY—By Andy Razaf and Thomas Waller.

Get them for your Piano, Talking Machine and Player Piano

Santly Songs on sale wherever music is sold or order direct  
from publisher—35 cents a copy—(3 for \$1.00)

**SANTLY BROS., Inc. - MUSIC PUBLISHERS**  
**755 - 7th Avenue Earl Carroll Theatre Bldg. New York City**