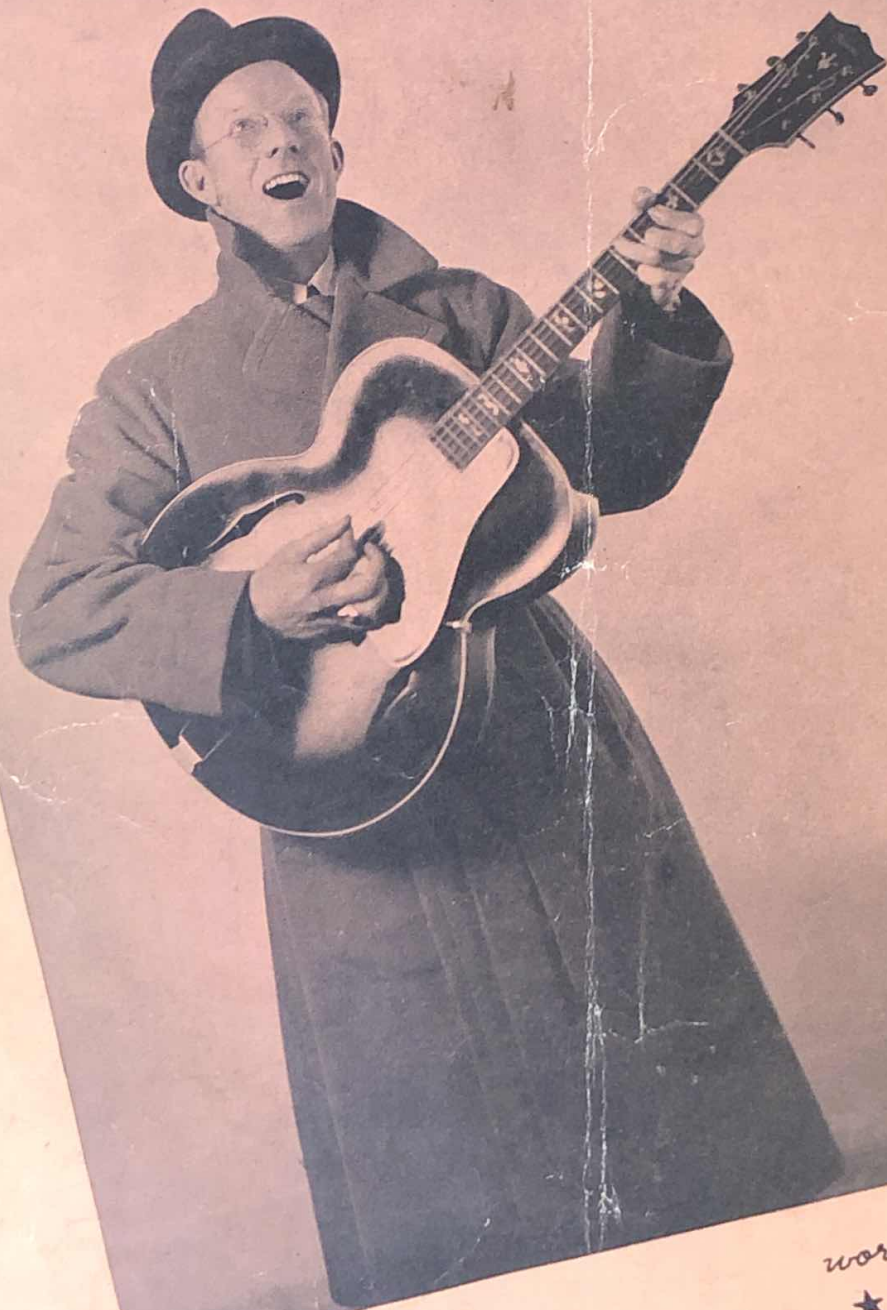
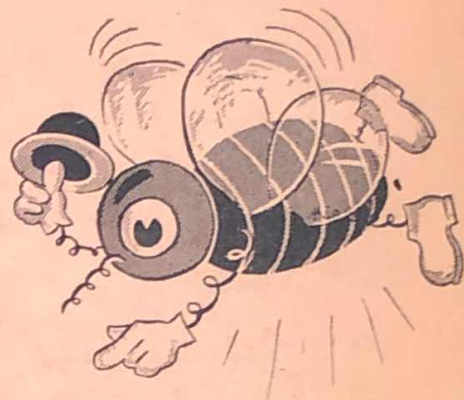


THE LOVE BUG WILL BITE YOU

(If you don't watch out!)



PROGRESS
N.Y.



!!!
m...
m...
m...

words and music by...
★ **PINKY TOMLIN**

writer of
'THE OBJECT OF MY AFFECTION'
'WHAT'S THE REASON I'M NOT PLEASIN' YOU'

 **SANTLY BROS.-JOY, Inc.**
MUSIC PUBLISHERS
1619 Broadway • New York City

'SING SANTLY SONGS'

The Love Bug Will Bite You

(If You Don't Watch Out)

(Diagrams for Guitar Acc.)

Words and Music by
PINKY TOMLIN

MODERATO

PIANO

Musical notation for the piano introduction, featuring a treble and bass clef with a key signature of one sharp (F#). The piece is in 4/4 time and marked 'MODERATO'. The piano part begins with a forte (f) dynamic. The right hand plays a rhythmic pattern of eighth notes, while the left hand provides a bass line with some triplets and eighth notes. The introduction concludes with a final chord marked with an accent (^) and a fermata.

VOICE *recitative*

Emi. (E minor triad)
B7 (Dominant 7th)
Emi. (E minor triad)
C (C major triad) B7 (Dominant 7th)
Emi. (E minor triad)
B7 (Dominant 7th)

List - en all you peo - ple, You'd bet - ter be - ware; Love's an ep - i - dem - ic And

Musical notation for the first line of the voice part, including a treble clef, a key signature of one sharp, and a 4/4 time signature. The melody is written in a recitative style. Below the voice line is a piano accompaniment with a mezzo-piano (mp) dynamic, consisting of a treble and bass clef with chords and moving lines.

it's in the air. It's a thing that gets you ev - en tho' you're ve - ry smart, So

Emi. (E minor triad) G (G major triad) A9 (A dominant 9th)
Emi. (E minor triad) G aug. (G augmented triad) G (G major triad) A9 (A dominant 9th)

Musical notation for the second line of the voice part, continuing the melody and piano accompaniment from the previous section.

take some good ad - vice; Go out and vac - cin - ate your heart.

A7 (A dominant 7th) Cmi. (C minor triad) D7 (Dominant 7th)

Musical notation for the third line of the voice part, concluding the piece with a final chord marked with an accent (^) and a fermata.

*Faster
second time*

Ami C D7 G

Da da da doo with a ho-ho-hay hay) THE LOVE BUG WILL BITE YOU If you

Ami Cmi D7 G Ami Cmi D7

don't watch out. If he ev - er bites you Then you'll sing and shout; You'll go

G (*Optional Break)

(Da dee da dee da dee da and whoa dee doe dee doe)

slow

A9 D7 1. G Emi G dim D7 2. G D7 G

That's what love is all a - bout. THE bout.