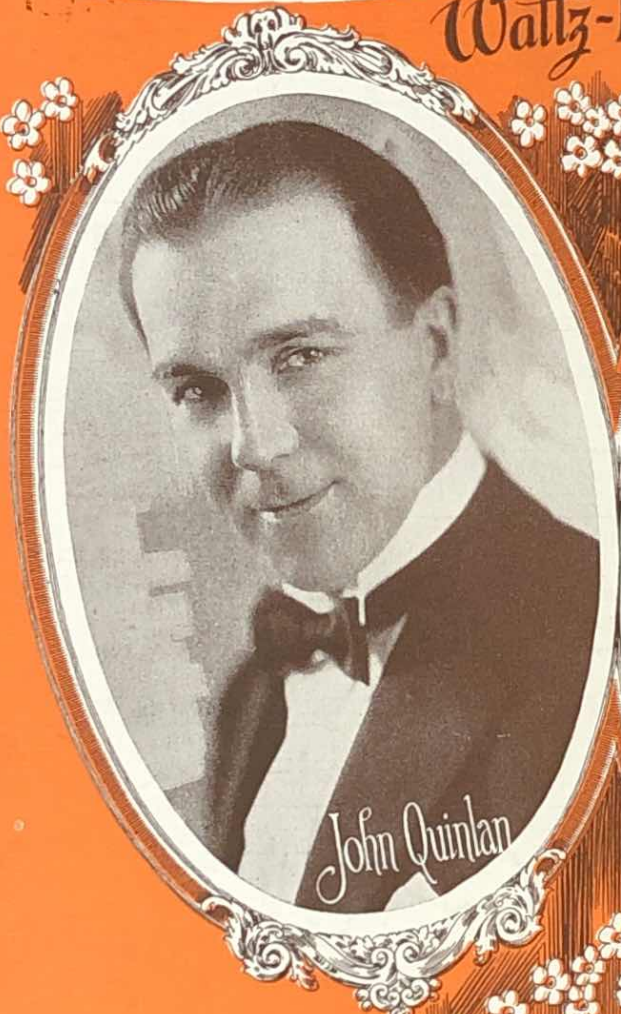


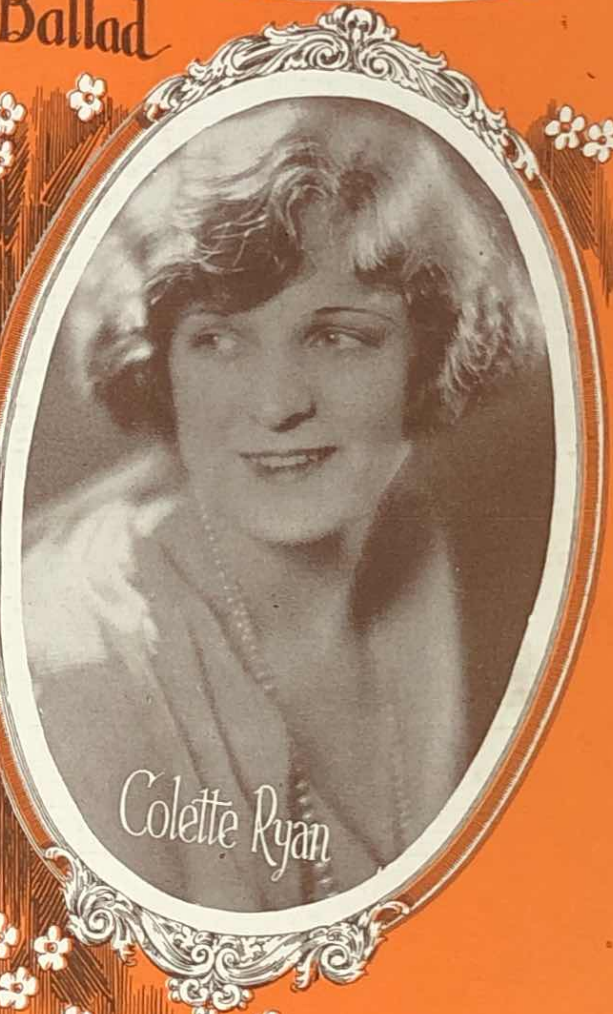
Nearer and Dearer

Ormine

Waltz-Ballad



John Quinlan



Colette Ryan

Lyric by
Haven Gillespie
Music by
Egbert Van Alstyne

Jerome H. Remick & Co.
New York Detroit

MADE
IN
U.S.A.

NEARER AND DEARER

Lyric by
HAVEN GILLESPIE

SONG

Music by
EGBERT VAN ALSTYNE

Valse Moderato

VOICE

PIANO

Andante Moderato (*with expression*)

I used to won - der what there was a - bout you Thrill'd me so I
I've heard of love but nev - er knew its mean - ing Till we met And.

won - dered why I could - nt live with - out you But now at last I know I've
now it seems the les - sons I am glean - ing I nev - er will for - get My

found love's se - cret in my heart It's just be - cause you're you
heart for - ev - er dear will pray To learn from you each day

REFRAIN
Valse Lento

Ev - 'ry lit - tle thing you do or say Seems to cling to

p

me both night and day Ev - 'ry time you smile or

ev - 'ry time you sigh My arms are long - ing to hold

you When I see the love with - in your eyes

p

All the world to me is Par - a - dise Ev' - ry lit - tle

day in ev - 'ry lit - tle way You're near - er and dear - er to

3rd Chorus

me Ev - 'ry lit - tle thing you do or

say Seems to cling to me both night and day

Ev - 'ry time you smile or ev - 'ry time you sigh My arms are long-ing to

hold you When I see the love with - in your eyes

All the world to me is Par - a - dise Ev - 'ry lit-tle day in

ev - 'ry lit-tle way You're near-er and dear-er to me _____ D.C.