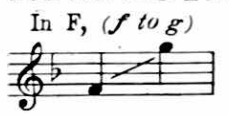
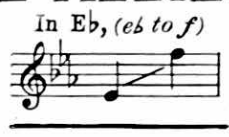
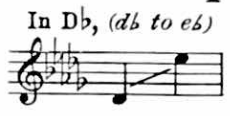


DEDICATED TO THE GLORY AND SUCCESS OF
THE ALLIED NATIONS



RING OUT! SWEET BELLS OF PEACE



LYRIC BY

WILLIAM H. GARDNER

Author of "THY BEAMING EYES" "HONEY IF YO' ONLY KNEW" "THE CROWN OF LIFE" Etc.

MUSIC BY

CARO ROMA

Writer of

"THE SILENT VOICE" "I COME TO THEE" "RESIGNATION"
"GOD SHALL WIPE AWAY ALL TEARS" Etc.

Solo 60 cents

Duet 75 cents

QUARTET FOR ALL VOICES 15¢ EACH NET

OCTAVO

TRIO - THREE PARTS (UNCHANGED VOICES) 10¢



M. WITMARK & SONS

NEW YORK - CHICAGO - PHILADELPHIA
SAN FRANCISCO - BOSTON
LONDON

Ring Out, Sweet Bells Of Peace!

Lyric by
Wm H. GARDNER

Music by
CARO ROMA

Well marked

f *arpeggio*

The piano introduction consists of two staves in 4/4 time, key of B-flat major. The right hand features a series of chords, some of which are arpeggiated. The left hand provides a steady accompaniment with chords and single notes. The piece begins with a forte (*f*) dynamic.

With expression

A white dove flies at the dawn-ing, An an-gel sings o'er the sea;
No more on fields red with bat-tle Will blood of he-roes be shed;

ff *p*

con sgu

The first vocal line is in 4/4 time, key of B-flat major. The lyrics are: "A white dove flies at the dawn-ing, An an-gel sings o'er the sea; No more on fields red with bat-tle Will blood of he-roes be shed;". The piano accompaniment features a strong dynamic of *ff* (fortissimo) in the right hand, with a *p* (piano) dynamic in the left hand. The piano part includes arpeggiated chords and a melodic line in the right hand. The instruction *con sgu* (con sguancia) is written below the piano part.

"This is a won-drous morn-ing, "For — free-dom and Lib-er - ty!" Lo!
And on-ly birds will sing there, A — re-qui-em to our dead. For

f

The second vocal line continues in 4/4 time, key of B-flat major. The lyrics are: "This is a won-drous morn-ing, "For — free-dom and Lib-er - ty!" Lo! And on-ly birds will sing there, A — re-qui-em to our dead. For". The piano accompaniment features a forte (*f*) dynamic throughout. The piano part includes arpeggiated chords and a melodic line in the right hand.

out from the stars of mid - night, God bade all war to cease; And
 Right o - ver Might has tri - umphed, The world has found re - lease; At

now for the wait - ing na - tions, At last there reign - eth Peace! —
 last! all our pray'rs are an - swered, At last! there's bles - sed Peace! —

little slower *rit.*

Joyously with much expression

Ring out! Ring out! Ring out, sweet bells of Peace! Ring

out! Ring out! the Lord has sent re - lease! The

The piano accompaniment consists of a treble and bass clef. The treble clef has a melodic line with some grace notes and a final note with a fermata. The bass clef provides harmonic support with chords and moving lines. Dynamics include *p* (piano) at the end.

world is safe, and right is won! The vict - 'rys gained, the task is done! The

The piano accompaniment continues with a steady harmonic accompaniment. The treble clef has a melodic line with some grace notes. The bass clef provides harmonic support with chords and moving lines.

clouds of war at last shall cease, Ring out, sweet bells of Peace! —

The piano accompaniment features dynamic markings: *f* (forte), *rit.* (ritardando), *a tempo*, *rit.*, and *ff* (fortissimo). The treble clef has a melodic line with some grace notes and a final note with a fermata. The bass clef provides harmonic support with chords and moving lines.