

# WHEN THE ANGELUS IS RINGING



JOE YOUNG  
AND  
BERT GRANT

WATERSON · BERLIN & SNYDER ©  
MUSIC PUBLISHERS  
112 WEST 38<sup>TH</sup> ST. NEW YORK

# When The Angelus Is Ringing.

Words by JOE YOUNG.

Music by BERT GRANT.

*Andante.*

*ff* L.H. *Till ready* *p*

The piano introduction consists of two staves. The left hand (L.H.) starts with a fortissimo (*ff*) dynamic, playing a series of chords in the bass clef. The right hand (R.H.) plays a melody in the treble clef, starting with a piano (*p*) dynamic. The tempo is marked *Andante*. The piece concludes with a double bar line and repeat dots.

Love time, love time can't you un-der-stand when it is  
Two hearts true hearts all the world is full of lov-ing

L.H.

The first system of the vocal and piano accompaniment. The vocal line is in the treble clef, and the piano accompaniment is in the bass clef. The lyrics are written below the vocal line. The piano part provides harmonic support for the vocal melody.

love time Birds sing bells ring,  
sweet - hearts I'll bring the ring,

The second system of the vocal and piano accompaniment. The vocal line continues with the lyrics. The piano accompaniment continues to support the vocal melody.

love just seems to ring with ev'-ry chime, — Ding dong — dong  
to the peal-ing of each sil - v'ry chime, — Ding dong — dong

The third system of the vocal and piano accompaniment. The vocal line concludes with the lyrics. The piano accompaniment continues to support the vocal melody.

ding, loves mes - sag - es they bring.  
ding, all na - ture seems in rhyme.

Chorus.

When the an - ge - lus is ring - ing in the bel - fry on the

*p-f*

hill, And the whip-poorwill is sing - ing

in the night, when all is still, I am wait - ing for the

time when I can come to you and sing loves sweet song.

While the sil - v'ry bells peal out their dong ding

dong, Down the road of love we'll wan - der 'mid the vi - o - lets per-

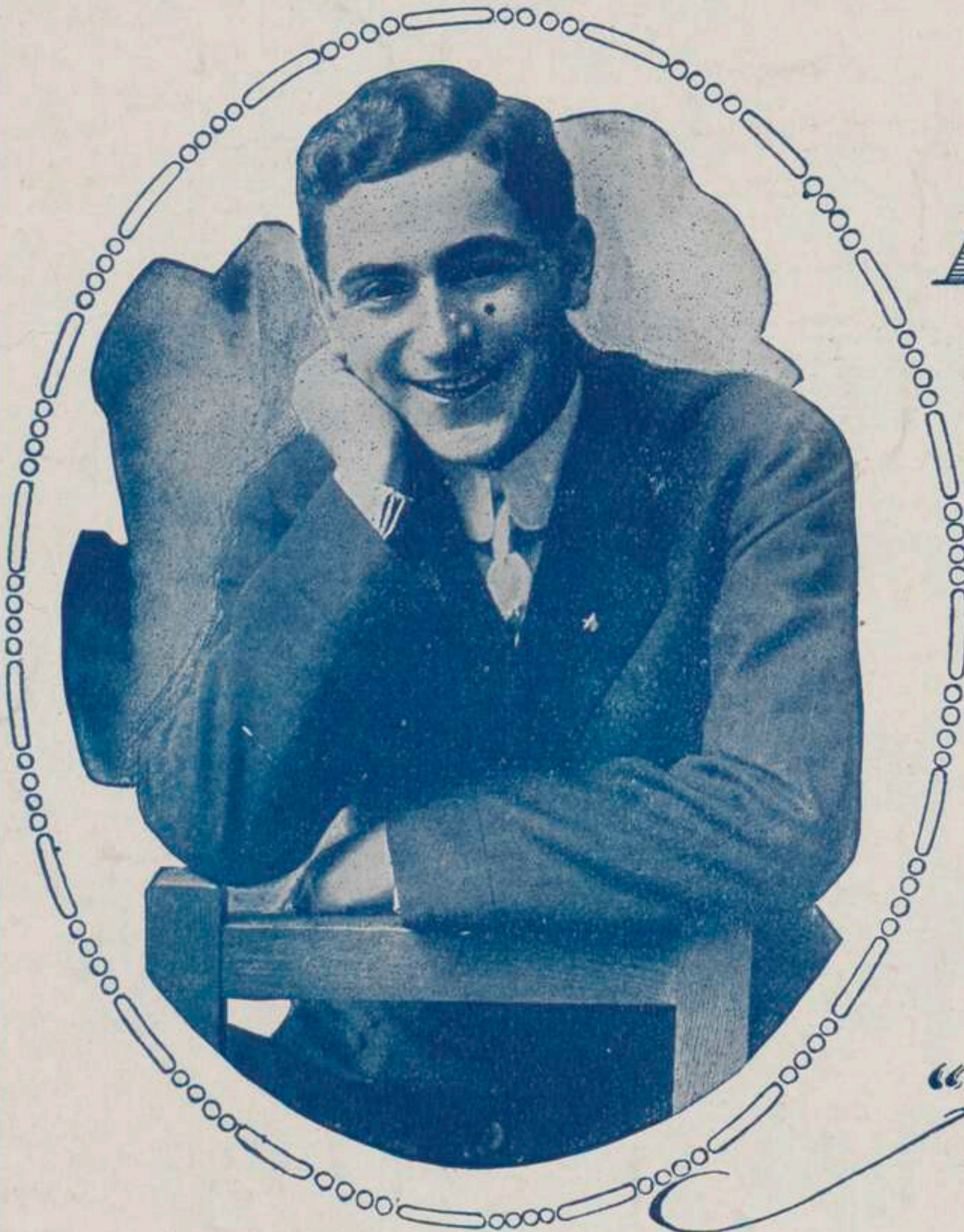
fume to the lit - tle cot - tage yon - der

when we'll spend our hon - ey moon; And as we

go through life from year to year, — Cares and wor - ries

dis - ap - pear, when the an - ge - lus is ring - ing,

1 dear, when the an - ge - lus is 2 dear, D.S.



# Irving Berlin

The Song Genius  
of  
The World  
says:-

This song surpasses all  
my previous efforts.  
I can safely say ~ this is  
the best song I ever wrote.

## "Along Came Ruth"

### CHORUS

I was grow - ing ver - y fond of Mol - ly When a -

long came Ruth, a - long came Ruth, I thought an aw - ful lot of

Dol - ly When Ruth came a - long, My head be - gan to "Mer - ry - go - round," I

Copyright 1914 by Waterson, Berlin & Snyder Co., Strand Theatre Bldg. Broadway at 47th St. N.Y.

International Copyright Secured  
Copyright Canada 1914 by Waterson, Berlin & Snyder Co.