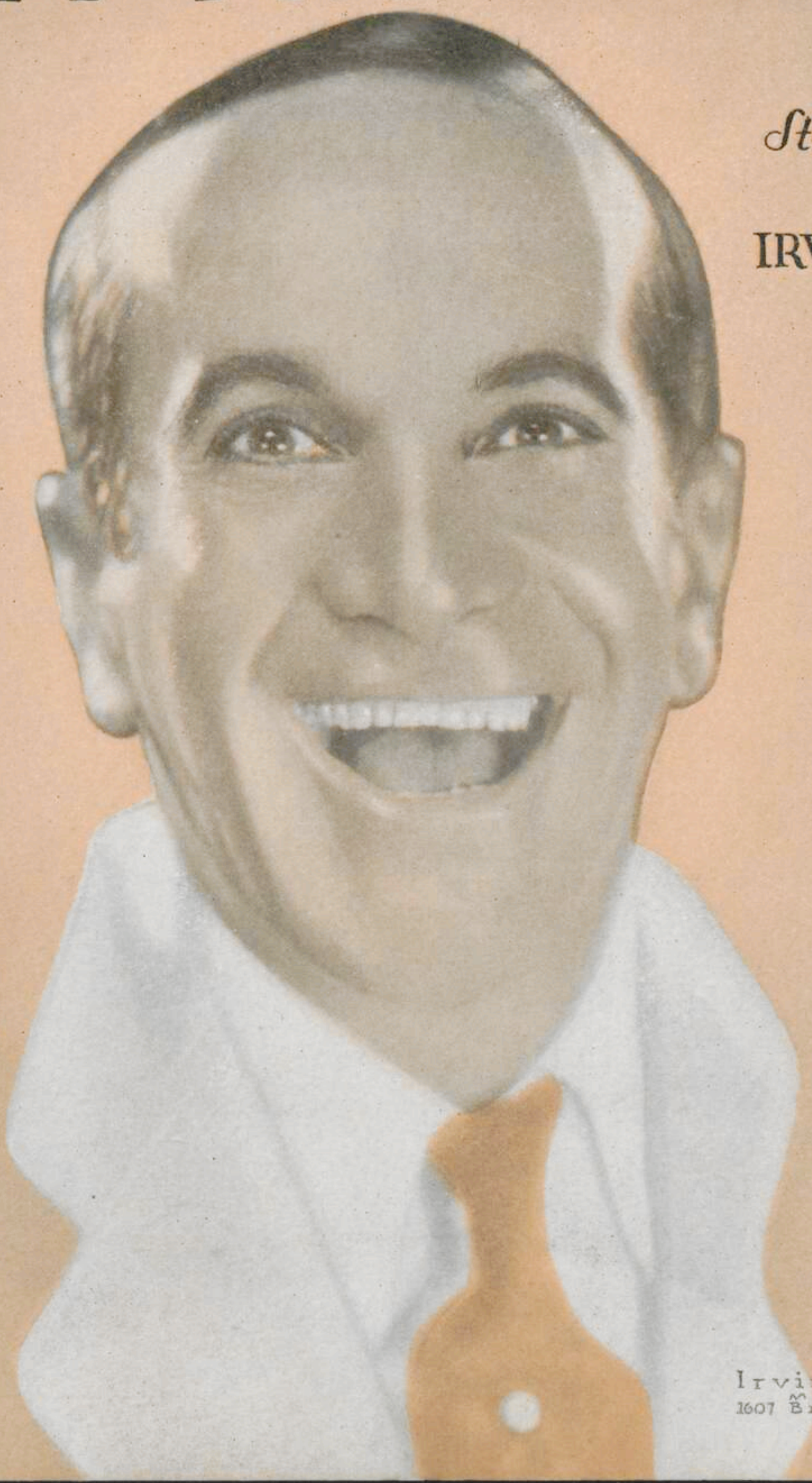


(ACROSS THE BREAKFAST TABLE)
LOOKING AT YOU

BS/51
119
c.1

AL JOLSON
in his Greatest Picture
“MAMMY”

Story and Songs
by
IRVING BERLIN



TO MY MAMMY
ACROSS THE BREAKFAST TABLE
LOOKING AT YOU
LET ME SING AND I'M HAPPY
A WARNER BROS.
VITAPHONE PRODUCTION



Irving Berlin, Inc.
MUSIC PUBLISHERS
1607 Broadway New York

MADE IN U.S.A. PRODUCTION NUMBER

(Across The Breakfast Table) Looking At You

Tune Ukulele
or Banjulele Banjo

A D F# B

Put Capo on 1st Fret

By IRVING BERLIN

Moderato

ff

The piano introduction consists of two staves. The right hand features a series of chords and arpeggiated figures, while the left hand provides a steady bass line. The music is marked 'Moderato' and 'ff'.

Vamp

p

The piano accompaniment is divided into two systems. The first system continues the introduction. The second system features a 'Vamp' section, indicated by a double bar line and the word 'Vamp' above the staff. The music is marked 'p'.

VOICE

Nev - er saw such per - fect beau - ty be - fore _____

p

The vocal line is on a single staff with guitar chord diagrams above it. The piano accompaniment is on two staves below. The music is marked 'p'.

Ukulele Arr. by MAY SINGHI BREEN

Copyright 1929 by IRVING BERLIN, Inc., 1607 Bway, N.Y.

International Copyright Secured

Made in U. S. A.

All Rights Reserved

Nev - er saw such charm - ing man - ners what's more _____

Nev - er saw such eyes of heav - en - ly blue _____

Nev - er saw what I see look - ing at you. _____

CHORUS

I could nev - er wea - ry ——— Look - ing at

p-f

you ——— Look - ing at you ———

All thro' life my dear - ie ——— Look - ing at

you ——— Look - ing at you ———

Wish that I were a - ble _____ to

make you say "I do" _____ and sit a -

-cross the break - fast ta - ble _____ Look - ing at you _____

— Look - ing at you. you. _____



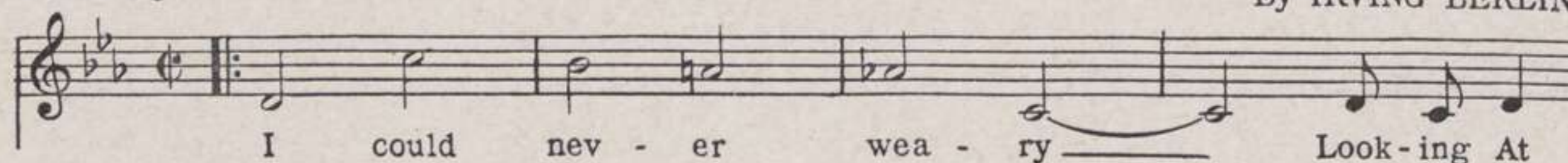
IRVING BERLIN WROTE THESE SONG HITS FOR

AL JOLSON

Across The Breakfast Table Looking At You

CHORUS

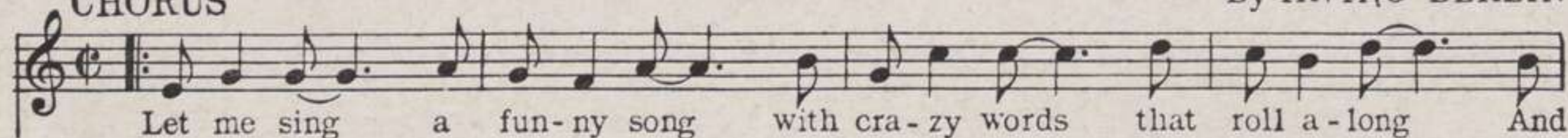
By IRVING BERLIN



Let Me Sing - And I'm Happy

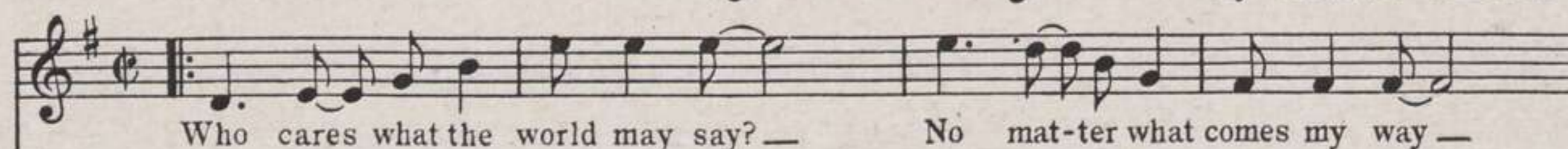
CHORUS

By IRVING BERLIN



To My Mammy

By IRVING BERLIN



Copyright 1929 by IRVING BERLIN, Inc., 1607 B'way, N.Y.

International Copyright Secured

Made in U.S.A.

All Rights Reserved

COPIES ON SALE WHEREVER MUSIC IS SOLD
This Number can also be had for your Phonograph and Player Piano
