

SONGS OF THE VIRGINIA SERENADERS.



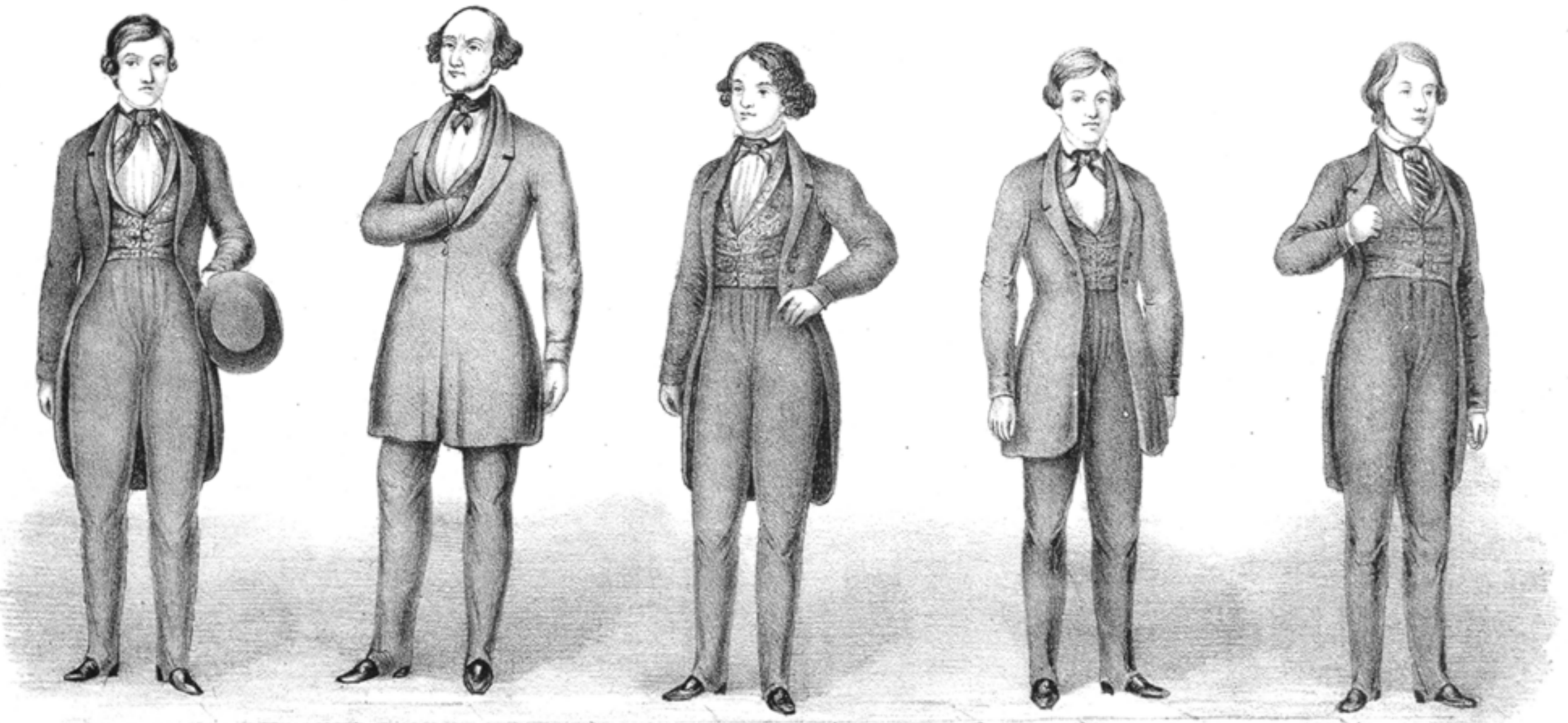
J. SANFORD

J. H. MYERS.

J. P. CARTER.

MASTER R. EDWARDS

C. WHITE



As sung by them with distinguished success in the principal Cities of the Union,

*Dandy Jim. (from Caroline)
Whar did you come from.
Dat Nigger is in lub wid Dinah,
Boston Gals.
Whats going on.
Lucy Long and her answer*

*Walk Jaw Bone.
Lubly Dine
Old Grey Goose.
Charleston Gals.
Walk along John
Old Pedee,*

*Yallar Gals,
Nigger put down dat Jug.
Sandy Boys
Cynthia Sue
Who's dat nigger dare peepin
In the days when we went hoeing corn*



Price 25 cts. net

ARRANGED FOR THE
PIANO FORTE,
BY
J. W. TURNER.

BOSTON.

Published at KEITH'S MUSIC PUBLISHING HOUSE, 67 & 69 COURT ST.

Entered according to act of Congress in the year 1884 by Charles H. Keith, in the clerk's office of the District Court for the District of Massachusetts.

*G. B. Woodbridge Agt.
For Virginia Serenaders*

NIGGER PUT DOWN DAT JUG.

WORDS BY COOL WHITE.

KEITH'S Publishing House, 67 & 69 Court St. BOSTON.

Andante con espressione.

The piano introduction consists of two staves. The right hand plays a melody of quarter notes in a B-flat major key signature. The left hand plays a rhythmic accompaniment of eighth notes, featuring several triplet markings.

Nigger put down dat jug..... Touch not a sin - gle drop; Pb

The first system of the song features a vocal line on a single staff and a piano accompaniment on two staves. The vocal line begins with the lyrics "Nigger put down dat jug....." and continues with "Touch not a sin - gle drop; Pb". The piano accompaniment provides a steady harmonic and rhythmic foundation.

gin it many a hug,..... An dar you lef it stop: 'Twas

The second system continues the vocal line with the lyrics "gin it many a hug,..... An dar you lef it stop: 'Twas". The piano accompaniment remains consistent with the first system.

dis ole nig - ger's hand..... Dat fust did place it dar; An

The third system concludes the vocal line with the lyrics "dis ole nig - ger's hand..... Dat fust did place it dar; An". The piano accompaniment continues to support the melody.

Ent'd according to Act of Congress A.D.1844 by C.H.Keith in the Clerk's Office of the Dist.Court of Ms.

dar you lef it stand Or else dis nig - ger swar.

2.

Dat ole famyliar jug,
 Chock full ob nigger rum,
 Lord how I lub to hug
 Becase de drunk soon come:
 Dar nigger lef it lay,
 Touch not a single taste;—
 Golly I cum dat way
 Your back wid ropes I baste.

3.

When but a nigger boy,
 A hoeing massa's corn,
 Lord how it gub me joy
 To take from dat a horn;
 I kiss it two tree time,
 An den I suck him dry;
 Dat jug he none but mine
 So dar you lef him be.

4.

My moufh around he cling
 Close as de rum ole frend,
 I kiss he an I sing
 Dat rum may nebber end:
 Nigger put down dat jug,
 Touch not a single drop;
 I'b gin it many a hug,
 An dar you lef it stop