

SONGS OF THE

SABLE HARMONISTS

SONGS, DUETTS, GLEES &c.

Arranged for the  
PIANO FORTE.

N<sup>o</sup> 1. *Julia an a beauty* ..... 25 cts. net. N<sup>o</sup> 2. *Jalapa Gals* ..... 25 cts. net.

3. *I seen her at de window* 25 cts. net. 4.

- |     |     |
|-----|-----|
| 5.  | 6.  |
| 7.  | 8.  |
| 9.  | 10. |
| 11. | 12. |
| 13. | 14. |
| 15. | 16. |
| 17. | 18. |
| 19. | 20. |
| 21. | 22. |
| 23. | 24. |



KNEASS' OPERA TROUPE

James K. Nease, Phila. 1858

114. Great Southville N.Y.

Published

Louisville W.C. PETERS & Co - PETERS & FIELD Cincinnati

Filed in Ky Dist Court Clk's Office  
30 Dec. 1858 at Williams & Co

I SEEN HER AT DE WINDOW.

3

As performed by BENSON'S Sable Harmonists.

Not too slow.



*p*

The first system of the piano introduction consists of two staves. The upper staff is in treble clef and the lower staff is in bass clef. The music is in 2/4 time and begins with a piano (*p*) dynamic. It features a series of chords and melodic lines, with some notes marked with an accent (^).

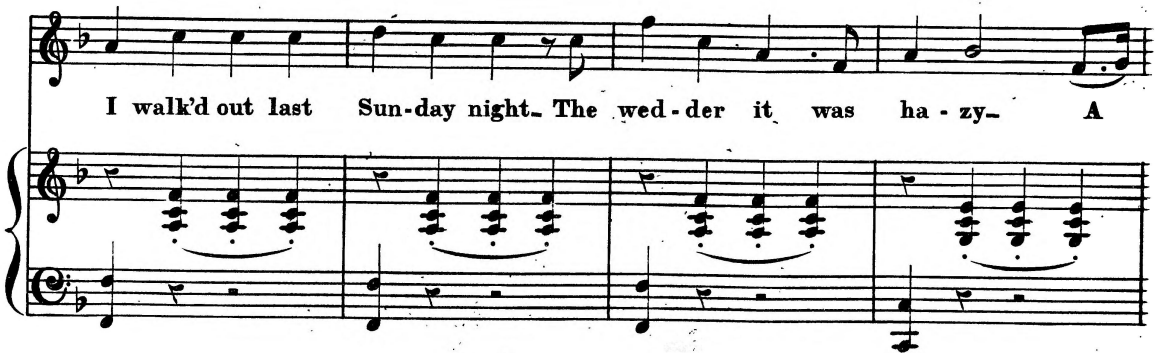
Solo



As

The second system of the piano introduction continues with two staves. It includes a section marked "Solo" in the upper staff and "As" in the lower staff. The music continues with similar chordal and melodic patterns as the first system.

I walk'd out last Sun-day night. The wed-der it was ha - zy- A



The third system contains the first line of lyrics. The upper staff shows the vocal line with the lyrics: "I walk'd out last Sun-day night. The wed-der it was ha - zy- A". The lower staff shows the piano accompaniment, consisting of chords and a simple bass line.

pretty Girl I chanc'd to meet. Oh! she set this color'd man era - zy!



The fourth system contains the second line of lyrics. The upper staff shows the vocal line with the lyrics: "pretty Girl I chanc'd to meet. Oh! she set this color'd man era - zy!". The lower staff shows the piano accompaniment, continuing the chordal and melodic patterns from the previous system.

Chorus. *f*

I seen her at de window It was my dear Lu - cin - da; She dress'd so neat and

*f*  
I seen her at de window It was my dear Lu - cin - da; She dress'd so neat and

look so sweet, I'd gin my life to bin in thar. I seen her at de window It

*pp*

look so sweet, I'd gin my life to bin in thar. I seen her at de window It

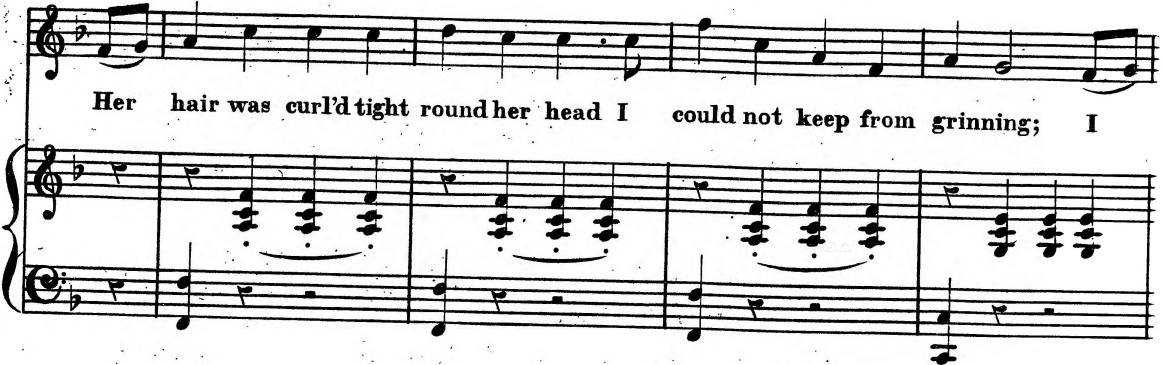
*pp*

was my dear Lu - cinda; She dress'd so neat and look so sweet, I'd gin my life to bin in thar.

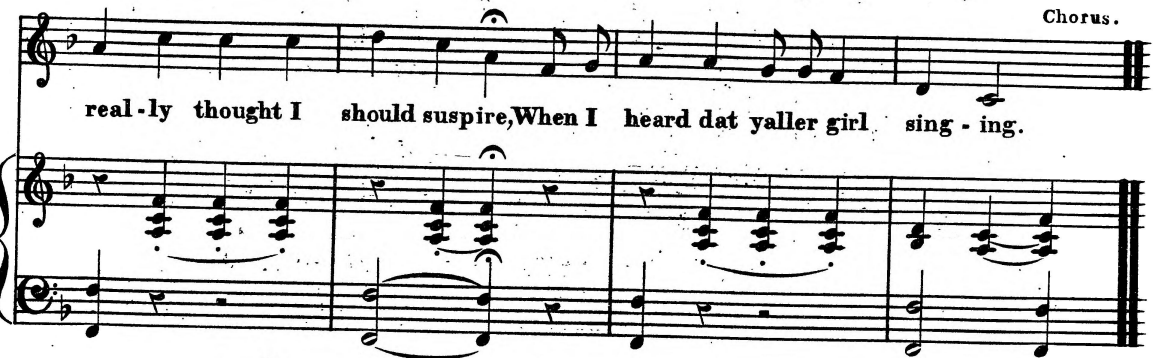
was my dear Lu - cinda; She dress'd so neat and look so sweet, I'd gin my life to bin in thar.



2<sup>d</sup> VERSE.



Her hair was curl'd tight round her head I could not keep from grinning; I



Chorus.

real-ly thought I should suspire, When I heard dat yaller girl sing - ing.

3

I go to de door and pull de string  
De bell it kept a ringing;  
Den she cum down and let me in,  
And dis here song kept singing. Chorus.

4

I got inside\_ I took a seat,  
And I thought I was a gon-er  
Dar sat her beau, young Julius Crow  
A noddin in de corner.

So I left her at de window  
I kiss my hand Lucinda;  
She dress so neat, and look so sweet,  
I wish dis nigga had'nt been dar.