

DOLLY DAY

A
PLANTATION MELODY

As Sung by

CHRISTY'S MINSTRELS

Written & Composed by

S.C. FOSTER.

By the same Author

ANGELINA BAKER. — MELINDA MAY.
OH! LEMUEL.

25^{cts} net

Published by MILLER & BEACHAM *Baltimore*
Successors to F. H. Beuten

354

DOLLY DAY.

WORDS AND MUSIC BY

S. C. FOSTER.

Moderato.

PIANO

The first system of the piano introduction consists of two staves. The upper staff is in treble clef with a key signature of two sharps (F# and C#) and a 2/4 time signature. It contains a melodic line starting with a quarter note G4, followed by eighth notes A4, B4, and C5, then a dotted quarter note B4, and ending with a quarter note G4. The lower staff is in bass clef with the same key signature and time signature, providing a harmonic accompaniment of chords.

The second system of the piano introduction continues the melodic and harmonic lines from the first system. The upper staff features a melodic line with a dotted quarter note G4, followed by eighth notes A4, B4, and C5, then a dotted quarter note B4, and ending with a quarter note G4. The lower staff continues the harmonic accompaniment.

I've told you 'bout de ban - - -jo, De fiddle and de bow, Like-

The first line of the song features a vocal line in the upper staff and piano accompaniment in the lower two staves. The vocal line starts with a quarter note G4, followed by eighth notes A4, B4, and C5, then a dotted quarter note B4, and ending with a quarter note G4. The piano accompaniment consists of chords in the right hand and a simple bass line in the left hand.

wise a - bout de cot - ton - field, De shubble and de hoe; I've

The second line of the song continues the vocal line and piano accompaniment. The vocal line starts with a quarter note G4, followed by eighth notes A4, B4, and C5, then a dotted quarter note B4, and ending with a quarter note G4. The piano accompaniment continues with chords and a bass line.

358

4

sung a - bout de bul - ... gine Dat blew de folks a - - - way, And

now I'll sing a lit - tle song A - - - bout my Dol - ly Day.

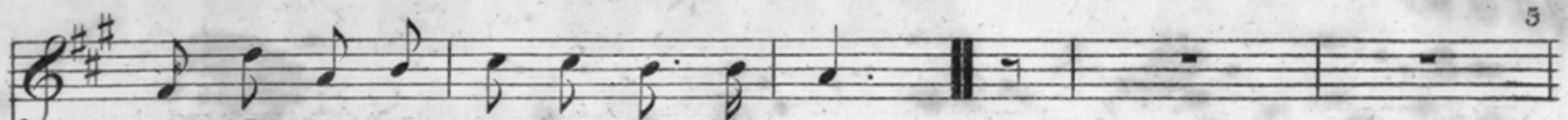
CHORUS.

1. Tenor. Oh Dolly Day looks so gay, I run all round and round, To hear her fairy

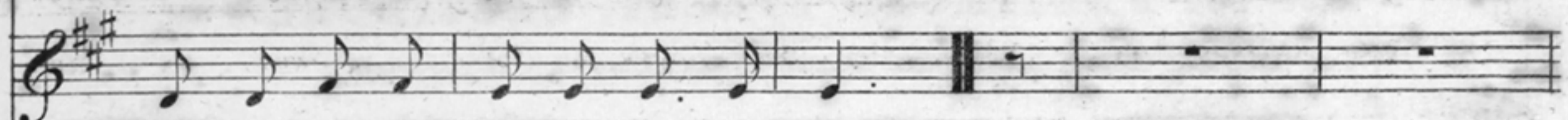
2. Tenor. Oh Dolly Day looks so gay, I run all round and round, To hear her fairy

Alto. Oh Dolly Day looks so gay, I run all round and round, To hear her fairy

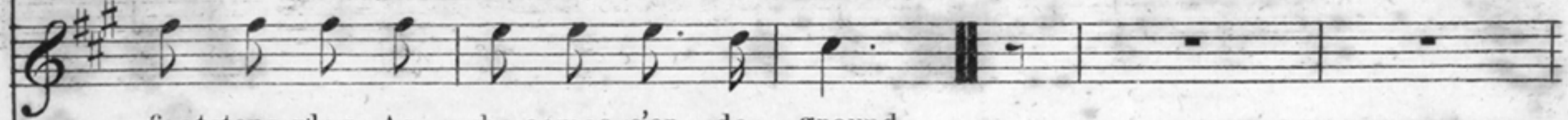
Bass. Oh Dolly Day looks so gay, I run all round and round, To hear her fairy



footsteps play, As she comes o'er de ground.



footsteps play, As she comes o'er de ground.



2.

I like to see de clover
Dat grows about de lane,
I like to see de 'bacco plant,
I like de sugar cane;
But on de old plantation
Der's nothing half so gay,
Der's nothing dat I love so much
As my sweet Dolly Day.

CHO: Oh Dolly Day &c

3.

When de work is over
I make de banjo play,
And while I strike de dulcem notes,
I think of Dolly Day.
Her form is like a posy—
De lily of de vale,
Her voice is far de sweetest sound
Dat floats upon de gale.

CHO: Oh Dolly Day &c.

4.

Massa give me money
To buy a peck of corn
I'se guine to marry Dolly Day
And build myself a barn;
Den when I'm old and feeble,
And when my head is grey,
I'll trabble down de hill of life
Along wid Dolly Day.

CHO: Oh Dolly Day &c.