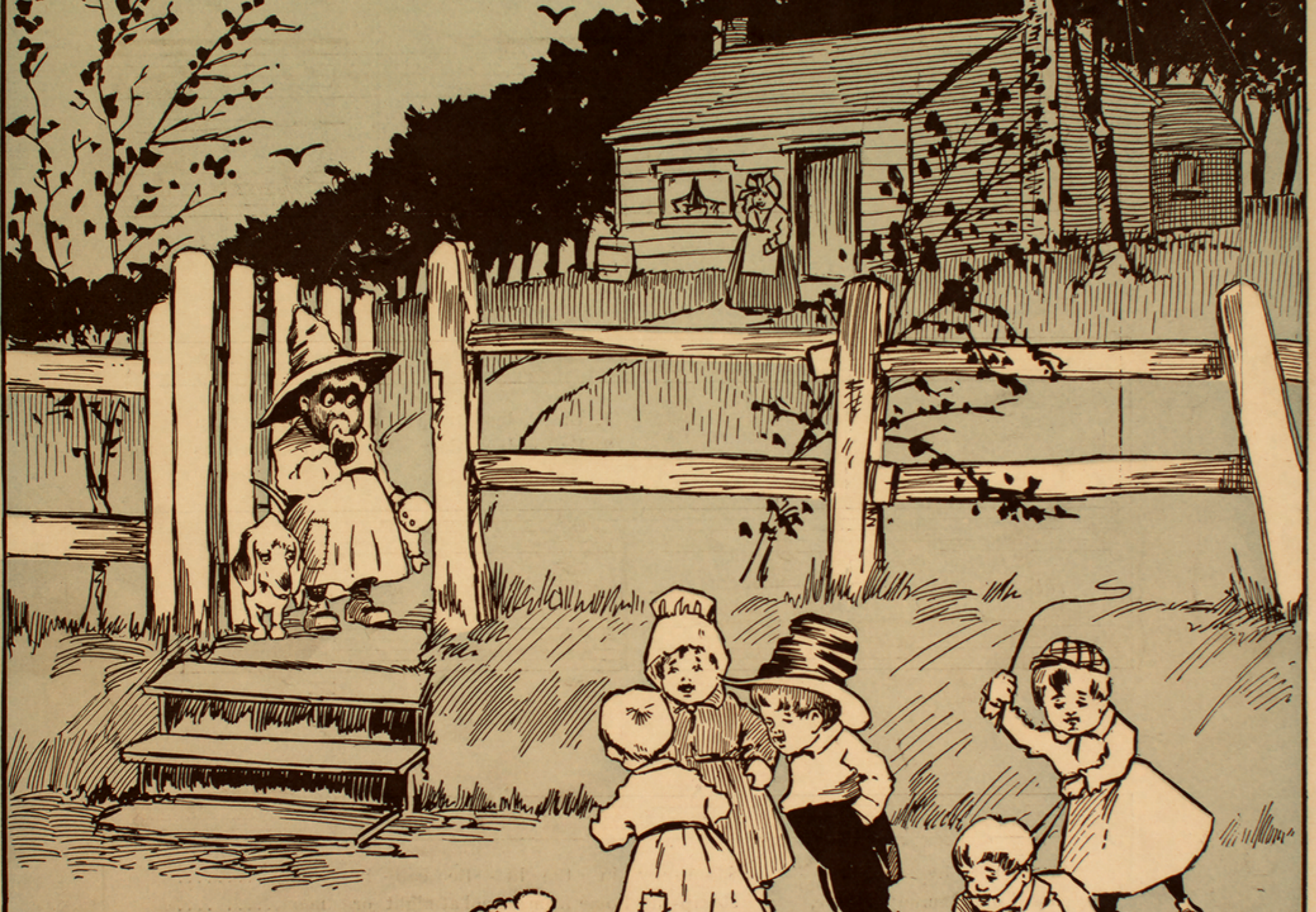


STAY IN YOUR OWN BACKYARD



PATHETIC
BALLAD & REFRAIN

5

BAND. ORCHESTRA.
BANJO. MANDOLIN. GUITAR.

WORDS BY
KARL KENNETT

MUSIC BY
LYN UDALL

WRITERS OF
"JUS' ONE GIRL" "ZIZZY ZE ZUM ZUM."
"JUST AS THE SUN WENT DOWN." ETC. ETC.

Stay in Your Own Backyard.

Words by **KARL KENNETT.**

Music by **LYN UDALL.**

Moderato.

mf

The piano introduction consists of two staves. The right hand plays a melody of eighth notes in a B-flat major key signature, starting on G4 and moving up stepwise to D5. The left hand provides a harmonic accompaniment with chords and single notes.

1. Li - lac trees a bloom - ing in the
2. Ev - 'ry - day the chil - dren as they

rall. *p*

The vocal line begins with a rest for the first measure, then enters with the lyrics. The piano accompaniment is in a B-flat major key signature and common time. The first line of music is marked *rall.* and the second line is marked *p*.

cor - ner, by the gate, Mam - my in the lit - tle cab - in door,.....
passed old mam - my's place, Romp - ing home from school at night or noon,.....

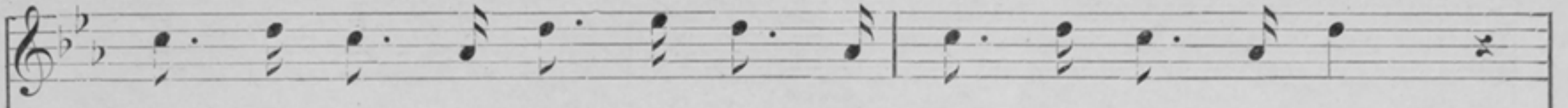
The vocal line continues with the lyrics. The piano accompaniment continues with chords and single notes, providing a harmonic support for the vocal melody.

ANOTHER BIG HIT.

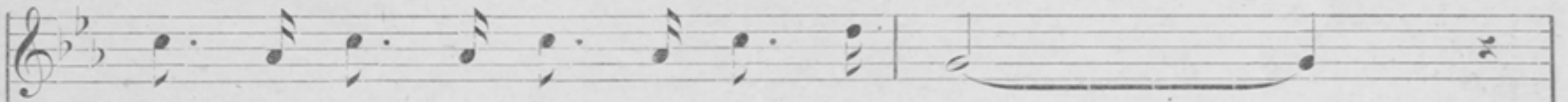
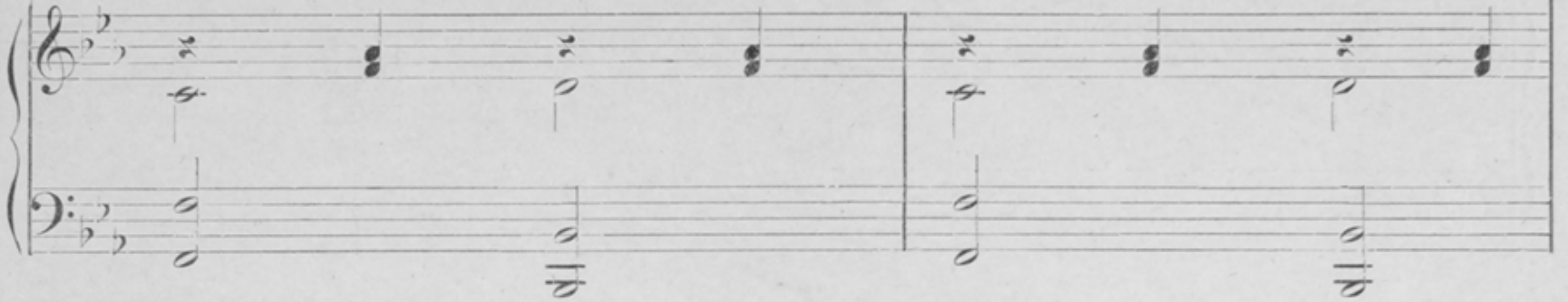
"JUST AS THE DAYLIGHT WAS BREAKING."

BY KENNETT & UDALL.

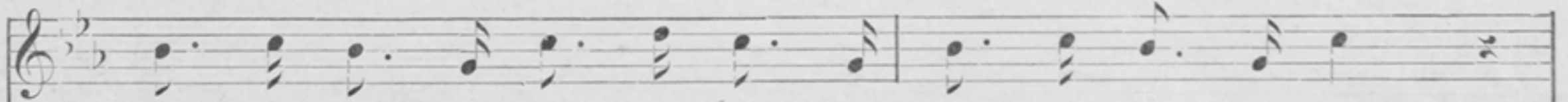
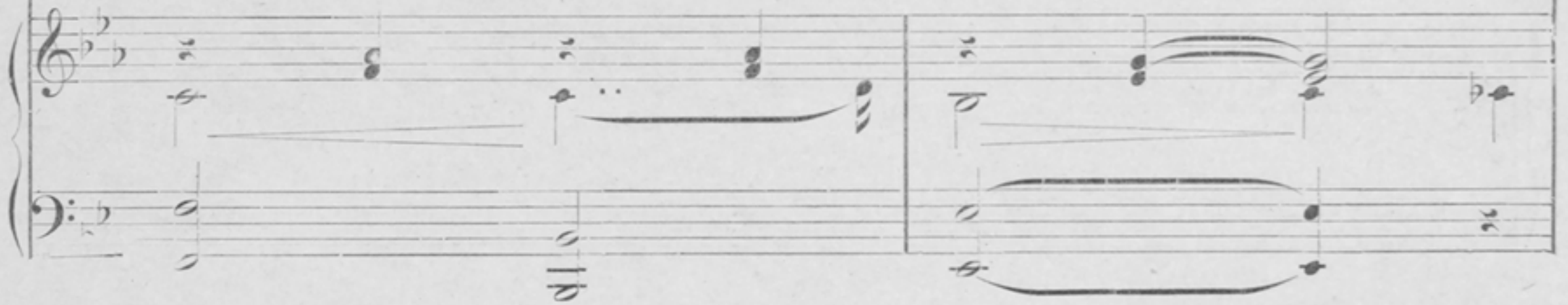
Writers of "Just as the Sun Went Down" and "Just One Girl."



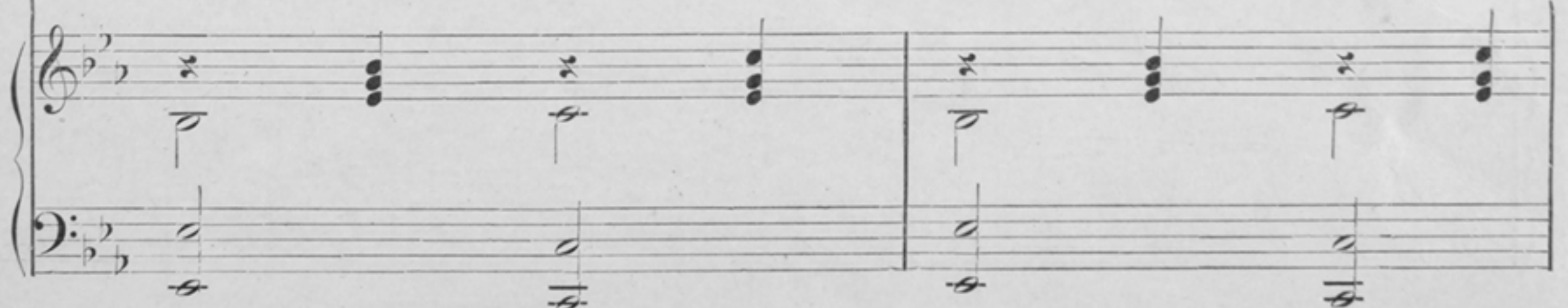
Curl - y head - ed pick - a - nin - ny com - in' home so late,
Peer - ing through the fence would see this eag - er lit - tle face,



Cry - in' 'cause his lit - tle heart is sore;.....
Such a wist - ful, lone - some lit - tle coon;.....



All the chil - dren play - ing 'round have skin so white and fair,
'Till one day the lit - tle face was gone for - ev - er more,



Stay in Your Own Backyard. 4 p.—2nd page. M. W. & Sons. 2240.

“MANDY FROM MANDALAY.”

A RAG TIME ODDITY.

BY FORD & BRATTON.

Words in peculiar rymth.

Music very characteristic.

None of them with him will ever play, So
 God had called this dusky little elf, And

Mam - my in her lap takes the lit - tle weep - ing chap, And
 Mam - my in the door sat and rocked as oft be - fore, And

says, in her kind old way :
 crooned to her old black self :

Stay in Your Own Backyard. 4 p.—3rd page. M. W. & Sons. 2240.

"ALWAYS."

A charming sister ballad to the famous "Because," by the same writers

HORWITZ & BOWERS.

Ask to look it over.

CHORUS. *Slowly.*

Now hon-ey, yo' stay in yo' own back yard, Doan min' what dem white chiles do;.... What

show yo' sup-pose dey's a gwine to gib A black lit - tle coon like yo' ?..... So

stay on dis side of de high boahd fence, An hon - ey, doan cry so hard :.... Go

out an' a - play, jes' as much as yo' please, But stay in yo' own back yard.....

Stay in Your Own Backyard. 4p.—4th page. M. W. & Sons. 2240.

MOST MAGNETIC.

“JUST AS THE SUN WENT DOWN”

BY LYNN UDALL.

“Bidding farewell to the stars and stripes,
Just as the sun went down.”

BEAUTIFUL, SIMPLE AND TOUCHING