

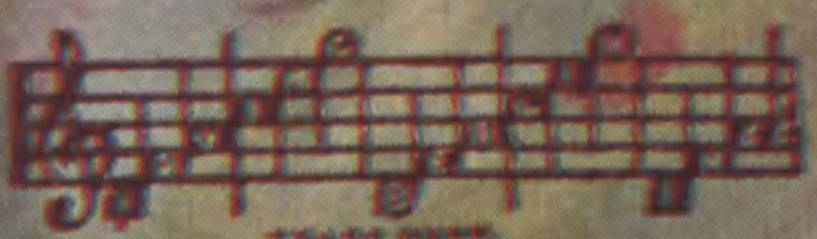
# SHAKING THE BLUES AWAY <sup>BS/51</sup><sub>25</sub>

Florenz Ziegfeld Presents  
*The* ZIEGFELD FOLLIES  
of 1927

Featuring  
*Eddie Cantor*  
Words & Music by  
*Irving Berlin*  
Dances by  
*Sammy Lee*

OOH, MAYBE IT'S YOU  
SHAKING THE BLUES AWAY  
IT ALL BELONGS TO ME  
LEARN TO SING A LOVE SONG  
WHAT MAKES ME LOVE YOU  
RIBBONS AND BOWS  
IT'S UP TO THE BAND  
RAINBOW OF GIRLS  
JIMMY  
JUNGLE JINGLE  
"IT"

IRVING BERLIN INC.  
Music Publishers  
1607 Broadway New York



MADE IN  
U.S.A.

# Shaking The Blues Away

Tune Ukulele  
or Banjulele Banjo

A D F# B  
put capo on 1st fret

By IRVING BERLIN

First system of piano introduction. Treble clef, bass clef, key signature of two flats (B-flat, E-flat), 2/4 time signature. Dynamics include *f* (forte).

Second system of piano introduction. Treble clef, bass clef, key signature of two flats, 2/4 time signature. Dynamics include *p* (piano).

VOICE

There's an old su-per-sti-tion 'way down south Ev-'ry dark - ie be -

Third system featuring the vocal line with lyrics and piano accompaniment. Treble clef, key signature of two flats, 2/4 time signature. Dynamics include *p* (piano). Includes guitar chord diagrams above the vocal line.

lieves that troub - le won't stay if you shake it a - way

Fourth system featuring the vocal line with lyrics and piano accompaniment. Treble clef, key signature of two flats, 2/4 time signature. Includes guitar chord diagrams above the vocal line.

Ukulele arrangement by MAY SINGHI BREEN

When they hold a re - vi - val way down south

Ev - 'ry dark - ie with care and troub - le, that day

tries to shake it a - way.

CHORUS

Shak - ing the blues a - way — Unhap - py news a - way —

*p-f*

If you are blue it's eas - y to shake off your cares and troub - les

*sfz sfz sfz sfz*

tel-ling the blues to go — They may re-fuse to go —

but as a rule they'll go — If you'll shake them a - way — Do like the

dark - ies do — List' - ning to — a preach - er way down south

— They shake their bod - ies so — to and fro —

With ev - ry shake a luck - y break prov-ing that there's a way —

to chase your cares a - way — If you would lose your wear-

— y blues shake 'em a way. way. —



HIS LATEST  
**IRVING BERLIN'S**  
**RUSSIAN LULLABY**

CHORUS

Ev 'ry night you'll hear her croon A

Russ - ian lull - a - by Just a

lit - tle plain - tive tune When ba by starts to

Copyright 1927 by IRVING BERLIN, Inc., 1607 B'way, N.Y.  
International Copyright Secured All Rights Reserved

COPIES ON SALE WHEREVER MUSIC IS SOLD  
This Number can also be had for your Phonograph and Player Piano