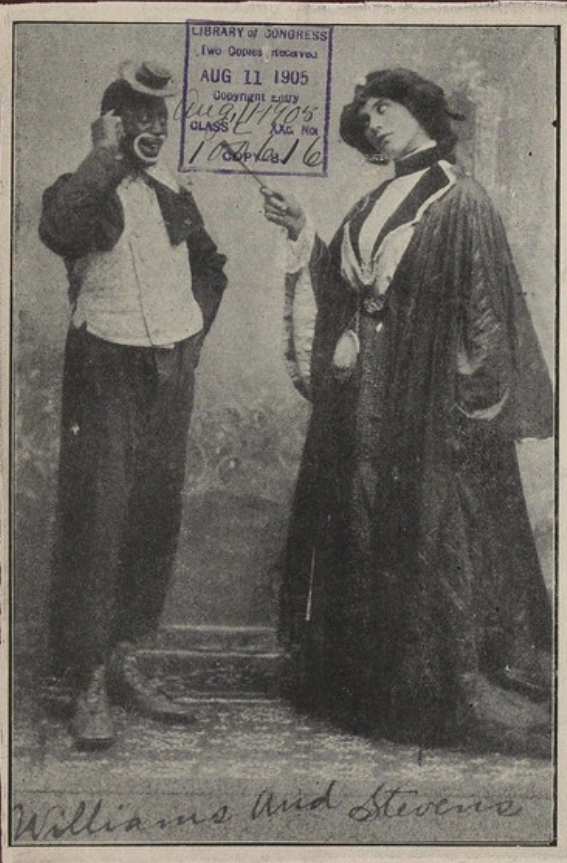


# WARAH DEAR

SUNG WITH GREAT SUCCESS BY



WORDS BY  
HENRY JACKSON.  
MUSIC BY  
SCOTT JOPLIN.

Library of Congress  
MUSIC DIV.  
CLASS M 1622  
COPY NO. 152351

PUBLISHED BY  
BAHNSEN MUSIC CO.  
1522 OLIVE ST. ST. LOUIS, MO.

Respectfully Dedicated to Miss Sarah Jarrett.

# Sarah Dear.

Words by HENRY JACKSON.

Music by SCOTT JOPLIN.

Slow march tempo.

The piano introduction consists of two systems of music. The first system shows a treble clef staff with a whole rest, followed by a grand staff (treble and bass clefs) with a 2/4 time signature and a key signature of one flat. The music is a slow march tempo. The second system continues the piano accompaniment with various chords and melodic lines in both hands.

§ Vamp' till ready.

The vamp section begins with a treble clef staff containing a whole rest, followed by a grand staff. The music is in 2/4 time and one flat. The piano accompaniment is marked *mp* (mezzo-piano). The section is repeated twice, with the second repetition leading into the vocal entry.

1 Just a-bout the time that I  
2 You're the sweet-est girl that

The main body of the song features a vocal line and piano accompaniment. The vocal line is in a treble clef, and the piano accompaniment is in a grand staff. The lyrics are: "fall a - sleep, I'm think - ing of my Sa - rah dear; I could find, you my Sa - rah dear;". The piano accompaniment provides a steady accompaniment for the vocal line.

And as I a - wake from my slum - ber deep, — I'm still  
And you caused a thought to come to my mind, —

think - ing of Sa - rah dear; \_\_\_\_\_ When  
you my Sa - rah dear; \_\_\_\_\_

e'er I get a glimpse of you dear girl, my  
I've a ques - tion that I would ask of you, you can

heart is filled with glee; — When you are with me — it's  
make me hap - py through life; — And when we're a - lone — the

pleas - ure you see, with you I lone to be. —  
truth will be known, I'll ask you to be my wife. —

## CHORUS

O! you are my Sa - rah dear, the sun - light of my

soul; — You have won my heart and hand

All of my love you stole; You are sweet - ness

to my lips your ten - der voice I love to hear, — And

when I am near, — you've noth - ing to fear, — be -

lieve me Sa rah dear. — dear. —