



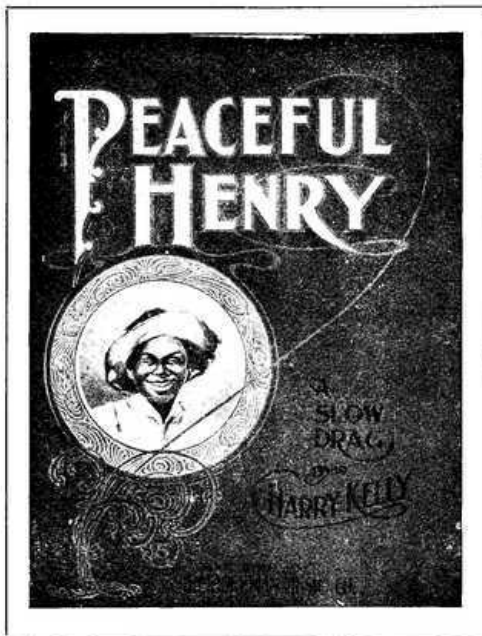
UNDER A PANAMA

WORDS BY VINCENT BRYAN
WHITNEY WARNER PUB CO

MUSIC BY J.B. MULLEN
DETROIT NEW-YORK



BLANCHE ANDREWS



Peaceful Henry

is the title of what we believe will be the next big instrumental HIT of this country. It is unique and original, as you will see by playing the excerpt below.

New Instrumental ...Numbers...

- SUNRISE IN GEORGIA,
March
- CUBAN QUEENS,
March-Two-Step
- THREE LITTLE MAIDS,
Japanese Two-Step
- SOKO,
Arabian Intermezzo

If this music is not obtainable of your dealer, we will mail it to you upon receipt of 25 cents each, except "SOKO," which is 30 cents.

The
**WHITNEY-WARNER
PUBLISHING COM-
PANY,** Detroit, Michigan.

Send for Illustrated Catalogue - - F R E E

PEACEFUL HENRY. (A Slow Drag.)

By E. H. KELLY.

Copyright Transferred by Carl Hoffman To Whitney Warner Publishing Co - 1923

Under a Panama.

3

Words by VINCENT BRYAN

Music by J. B. MULLEN.

Moderato.

The piano introduction consists of two staves. The right hand starts with a series of chords and eighth notes, marked *ff*. The left hand provides a steady accompaniment of chords and eighth notes. The tempo is marked *Moderato*.

VOICE.

The vocal line begins with the lyrics: "1. Lu - lu and Bill, by the light of the moon, Um! Um! they're" and "2. Lu says to Bill, 'sing a sen - si - ble song, Of high so -". The piano accompaniment continues with chords and eighth notes.

The vocal line continues with the lyrics: "woo - ing, Bill sings a song 'bout an Af - ri - can coon, ci - e - ty, Liv - ing on love in a jun - gle is wrong,". The piano accompaniment continues with chords and eighth notes.

The vocal line concludes with the lyrics: "Troub - les are brew - ing. Bill says to Lu, 'Think how That's im - pro - pri - e - ty. If you want shade, get a". The piano accompaniment continues with chords and eighth notes.

Copyright, MCMIII, by The Whitney Warner Pub. Co. Detroit, Mich.
Entered according to act of the Parliament of Canada in the year 1903,
by Whaley Royce & Co. Limited at the Department of Agriculture.

4

hap-py we'd be, Down by the Con - go, We'd live on love 'neath a
Pan-a-ma hat, Act like you're civ-i-lized. Liv - ing in trees aint as

bam - boo tree." Lu - lu re - plies "not me." For
good as a flat, Lu - lu is not for that." For

CHORUS.
Moderato.

I know that mud-dy Con - go, I'll row

no cheap can - oe, My beau must have an au - to,

A bright-red au - to, — that's built for two. —

Bam - boos — may shade a Zu - lu, — In sun - ny Af - ri -

ca, — No coon — can win out Lu - lu, — Un-less he's

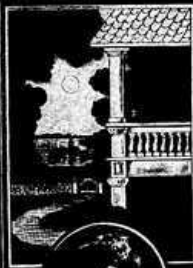
un - der — a Pan - a - ma, — ma. —

ff

D.C.

I WANTS A MAN LIKE ROMEO

WHITNEY
WARNER
PUB. CO.
DETROIT



WORDS BY
JAMES O'DEA
MUSIC BY
ROBT ADAMS



B ELOW is the chorus of
what we term a refined
coon song. The verse is
very funny; written by
O'Dea and Adams. ♪ ♪

NEW SONGS

TO-NIGHT

LENORE, MY OWN LENORE

'TIS YOU I LOVE

MY DREAM LADY

If any of the Compositions advertised are not obtainable of your Music Dealer, send 25c. to

The

**WHITNEY-WARNER
PUBLISHING COM-
PANY, Detroit, Michigan.**

Illustrated Catalogue—FREE

I Wants A Man Like Romeo.

by O'Dea and Adams.

CHORUS. *rit.* *altempo*

marked with em-phas-is. I wants a man like Ru- - me
this is how I feel.

rit. *altempo*

o Far to say sweet nothin's to me I

wants 'a man who'll climb a porch To reach my bal - - ce -

poco rit.

ny. I wants to cry out when in woe 'Where-fore, art thou

poco rit.

Copyrighted 1902, by The Whitney-Warner Pub. Co., Detroit, Mich.