

VOCAL AND
INSTRUMENTAL

SELECTIONS
FROM

Wetzer & Fiedler



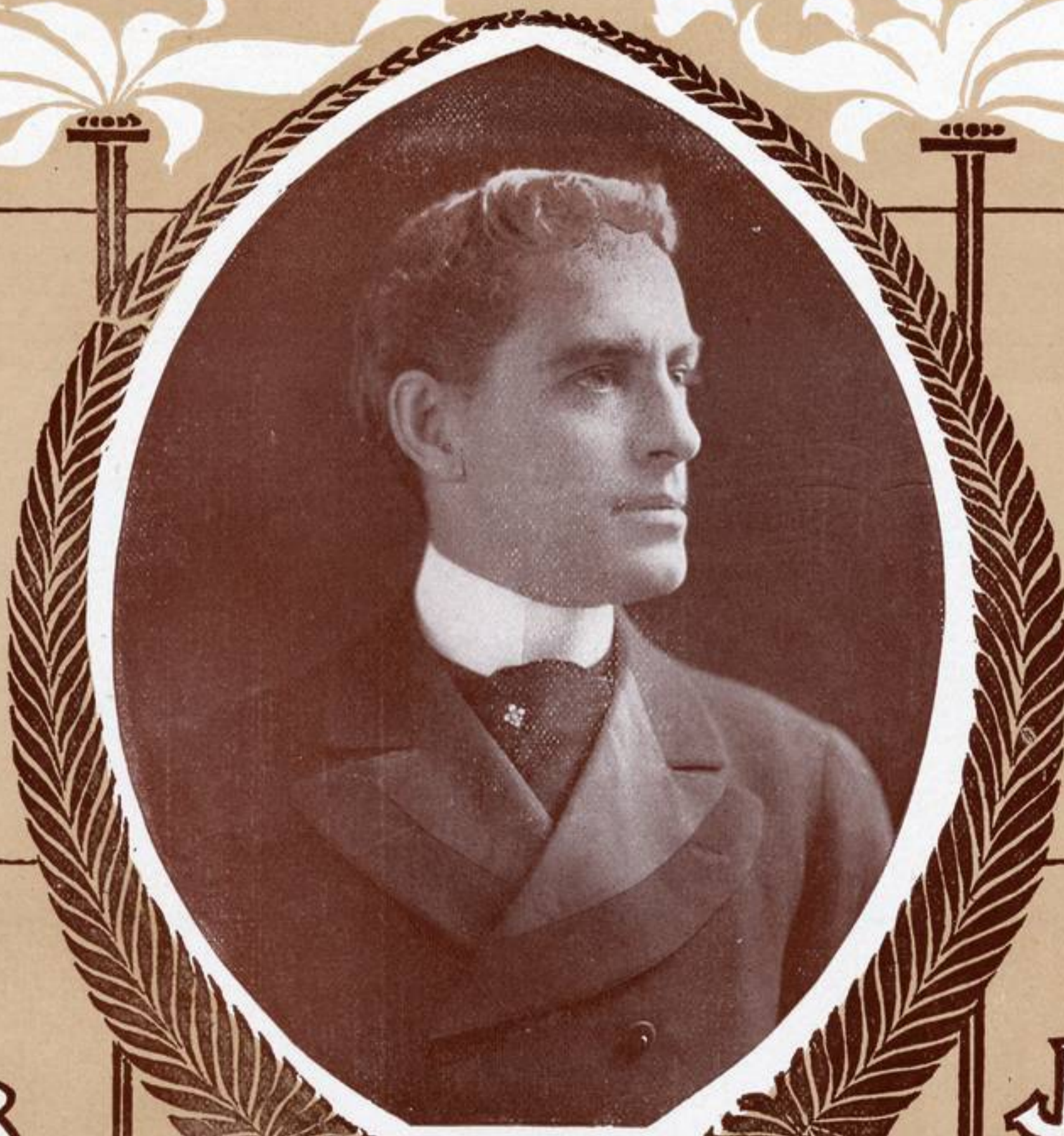
NEW BURLESQUE
PRODUCTION

D7636
3839

"HOITY-TOITY"

DE
PULLMAN
PORTERS'
BALL

SUNG BY
FRITZ
WILLIAMS



LYRICS
BY

EDGAR
SMITH

MUSIC
BY

JOHN
STROMBERG

M. WITMARK & SONS
NEW YORK CHICAGO LONDON
SAN FRANCISCO

De Pullman Porters Ball.

Lyrics by
EDGAR SMITH.

Music by
JOHN STROMBERG.

Allegro moderato.

Piano. *f*

p

'Twas a
All de

Copyright MCM I by M. Witmark & Sons.
International Copyright Secured.

The Theatrical and Music Hall Rights of this song for Great Britain are reserved; for permission apply to M. Witmark & Sons.
3893-4

dream ob de-light las' Sat-ur-day night at Ab-ram Lin-corn
walls ob de room was gai-ly fes-tooned wid wa-ter-mel-on

Hall, When de cul-lud e-lite was shak-in' dere feet At de
vine, Dey— pol-ished de flo' for a week— or mo' Wid de

Pull-man port-ers ball; Dey was not out fo' cash An' no
fin-es' ba-con rin; Dere was all kin's o' grub An'—

com-mon trash could min-gle, for love or cush, Yer
wine by de tub An' mu-sic by Skid-mores band; An'

had to be de fust ob de up - per crust, To min - gle wid dat push.
 ev' - ry dus - ky belle had a bo - quet to smell, In her white lil - y hand.

§ REFRAIN.

Oh! dem kings ob de rail - road downed 'em

all, An' dat New - port so - ci' - ty's got to

crawl, Ev' - - ry coon worth a mil - lion In de

rag-time co - til - lion At de Pull-man port-ers ball. *Fine.*

This system contains a vocal line and a piano accompaniment. The vocal line is in a treble clef with a key signature of two flats and a 4/4 time signature. The lyrics are "rag-time co - til - lion At de Pull-man port-ers ball." followed by a "Fine." marking. The piano accompaniment consists of two staves, with the right hand playing chords and the left hand playing a bass line. Both parts end with a "Fine." marking.

DANCE.

ff

This system is a piano accompaniment for a dance section. It features a treble clef with a key signature of two flats and a 4/4 time signature. The music is marked with a forte dynamic (*ff*). The right hand plays chords with some melodic movement, while the left hand plays a steady bass line.

This system continues the piano accompaniment from the previous system. It maintains the same key signature and time signature, with the right hand playing chords and the left hand playing a bass line.

This system continues the piano accompaniment, showing further development of the chordal and bass line patterns.

D.S.

This system concludes the piano accompaniment. It features a double bar line with a repeat sign (a circle with two dots) at the end. The marking *D.S.* (Da Capo) is placed at the bottom right of the system.

SONG SUCCESSES

Introduced in

Weber & Fields'

NEW BURLESQUE

"HOITY-TOITY"

Lyrics by
EDGAR SMITH

Music by
JOHN STROMBERG

As On Moonlit Waves We Ride	≈ ≈ ≈	≈ ≈ ≈	Sung by Lillian Russell	50
Poor Little Fluttering Moths	≈ ≈ ≈	≈ ≈ ≈	Sung by Lillian Russell	50
My Japanese Cherry Blossom	≈ ≈ ≈	≈ ≈ ≈	Sung by Fay Templeton	50
Mary Black	≈ ≈ ≈	≈ ≈ ≈	Sung by Fay Templeton	50
When Two Little Hearts are One (Duett),			Sung by DeWolf Hopper and Lillian Russell	50
The American Billionaire	≈ ≈ ≈	≈ ≈ ≈	Sung by DeWolf Hopper	50
De Pullman Porters' Ball	≈ ≈ ≈	≈ ≈ ≈	Sung by Fritz Williams	50
King Kazo of Kakaroo	≈ ≈ ≈	≈ ≈ ≈	Sung by John T. Kelly	50

Instrumental

Selection	≈ ≈ ≈	≈ ≈ ≈	75	March	≈ ≈ ≈	≈ ≈ ≈	50	
Waltzes	≈ ≈ ≈	≈ ≈ ≈	60	Lanciers	≈ ≈ ≈	≈ ≈ ≈	50	
"De Pullman Porters' Ball"			March and Two-Step	50	"My Japanese Cherry Blossom"		Two-Step	50
			Introducing "Mary Black."					

M. WITMARK & SONS
NEW YORK CHICAGO LONDON
SAN FRANCISCO