

#46

SELECTIONS

FROM

WILLIAMS & WALKER'S

MUSICAL COMEDY SUCCESS

Bandanna Land

1908

DIRECTION
F. RAY COMSTOCK



BOOK & LYRICS BY
J. A. SHIPP
AND
ALEX ROGERS
MUSIC BY
WILL MARION COOK
INTERPOLATIONS BY
BERT A. WILLIAMS



**IN MY
OLD HOME**

(In Dixie Land)



Try This On Your Piano.

The Sheath Gown In Darktown.

Words by
MORD ALLEN.

Music by
J. LUBRIE HILL.

Moderato.

mf

The first system of the piano introduction, featuring a treble and bass clef with a key signature of one sharp (F#) and a common time signature (C). The music is marked *mf* and *Moderato*. It consists of several measures of chords and moving lines in both hands.

Till ready.

Miss Bell - a - don - na Soph - ie Brown has been to
Miss Bell - a's got most all the fel - lows kneeling

The second system shows the vocal entry with lyrics. The piano accompaniment is marked *p* and includes a repeat sign. The lyrics are: "Miss Bell - a - don - na Soph - ie Brown has been to / Miss Bell - a's got most all the fel - lows kneeling".

gay Pa - ree, A la - dies maid, a
at her feet, And all the prim - and

The third system continues the vocal line with lyrics: "gay Pa - ree, A la - dies maid, a / at her feet, And all the prim - and". The piano accompaniment continues with chords and moving lines.

first class job, in a first class fam - i - ly, The
prop - er dams - els in a full re - treat, But

The fourth system continues the vocal line with lyrics: "first class job, in a first class fam - i - ly, The / prop - er dams - els in a full re - treat, But". The piano accompaniment continues with chords and moving lines.

Copyright, 1908, by Gotham-Attucks Music Co. Inc., 50 W. 29th St., N.Y.
English Copyright Secured. All Rights Reserved.

For Sale By All Dealers.

In My Old Home.

(IN DIXIE LAND.)

Words by
"MORD" ALLEN.

Music by
TOM LEMONIER.

Andante Moderato.

mf

Musical notation for the piano introduction, consisting of two staves (treble and bass clef) in 3/4 time, featuring a melody in the right hand and accompaniment in the left hand.

You ask a real dark-ey whats the dear-est place on earth, What's
 You ask him what of com-fort can the South hold out to him, With

Musical notation for the first vocal line, including a vocal staff and piano accompaniment.

near-est to per-fect-ion in his mind, _____ Where
 all the things that go to vex him there, _____ You

Musical notation for the second vocal line, including a vocal staff and piano accompaniment.

is the sum of hap-pi-ness con-tent-ment and of mirth, That
 tell him of the Phill-i-pines where life's not half so grim, And

Musical notation for the third vocal line, including a vocal staff and piano accompaniment.

Copyright, 1908, by Gotham-Attucks Music Co. Inc., 50 W. 29th St. N. Y.

English Copyright Secured.

All Rights Reserved.

with the world to chose from he can find, _____ He'll
 Cu - ba with its bal - my south-ern air, _____ But

nev - er choose the Rock-ies with their can-yons and their snows, Nor
 noth - ing can im - press him though you pick the wide world o'er, Can

It' - ly with its sun - ny skies so blue, _____ Nor
 bring the look of glad - ness to his eyes, _____ And you'll

bon-nie braes of Scot-land where the moun tain dai - sy grows, But
 know his heart is loy - al un - to Dix - ie ev - er more, When you

this is what hell al - ways an - swer you.
 speak of com - fort and he thus re - plies.

Refrain.

In my old home, _____ in Dix - ie land, _____ In my own

home, _____ to me its grand, _____ I can't help what you think of it, There's

no place else on earth so fit, As my old home _____ in Dix - ie land, _____

rit. *D.C.*

SEVEN SONG SUGGESTES

FROM
WILLIAMS & WALKER'S NEW MUSICAL CREATION

"BANDANA LAND."

60 | 4

60 | 4

Lyric by
ALEX. ROGERS.

FAS', FAS' WORLD.

Music by
BERT A. WILLIAMS.

CHORUS. *Allegro moderato.*



'Tis a fas' world,..... One mo' fas', fas' world,.....

Copyright, 1907, by the Gotham-Attucks Music Co. (Inc.), 50 W. 29th St. N. Y.

Lyric by
DAVID KEMPNER.

LATE HOURS.

Music by
BERT A. WILLIAMS.

CHORUS. *Moderato.*



Late hours, Late hours, Re - tri - bu - tion comes each morn,.....

Copyright, 1907, by the Gotham-Attucks Music Co. (Inc.), 50 W. 29th St., N. Y.

Lyric by
ALEX. ROGERS.

JUST THE SAME.

Music by
WILL MARION COOK.

CHORUS. *Tempo di Valse.*



But if it's love, then it is just The Same,.....

Copyright, 1907, by the Gotham-Attucks Music Co. (Inc.), 50 W. 29th St., N. Y.

Lyric by
ALEX. ROGERS.

BON BON BUDDY.

Music by
WILL MARION COOK.

CHORUS. *Moderato.*



Bon Bon Bud - dy, the choc - o - late drop, Dat's me;.....

Copyright, 1907, by the Gotham-Attucks Music Co. (Inc.), 50 W. 29th St., N. Y.

Lyric by
CECIL MACK.

IT'S HARD TO LOVE SOMEBODY

Music by
CHRIS. SMITH.

CHORUS. *Moderato.*



It's hard to love some - bod - y when that some - bod - y is lov - ing some - bod - y else,.....

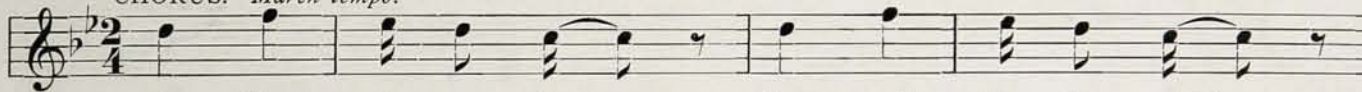
Copyright, 1907, by the Gotham-Attucks Music Co. (Inc.), 50 W. 29th St., N. Y.

Lyric by
"MORD" ALLEN.

BANDANA LAND.

Music by
WILL MARION COOK.

CHORUS. *March tempo.*



In Ban - da - na Land There we'll take our stand,

Copyright, 1907, by the Gotham-Attucks Music Co. (Inc.), 50 W. 29th St., N. Y.

Lyric by
ALEX. ROGERS.

DINAH.

Music by
WILL MARION COOK.

CHORUS. *March tempo.*



Di - nah, Di - nah, no gal am fin - er,

Copyright, 1907, by the Gotham-Attucks Music Co. (Inc.), 50 W. 29th St., N. Y.

- INSTRUMENTAL -

- SELECTION—Containing the principal melodies.....\$1.00
- WALTZ—Containing the two principal waltz themes......75
- MARCH AND TWO-STEP—Containing the principal march themes......60

THE GOTHAM-ATTUCKS MUSIC CO., 50 West 29th St., NEW YORK.

IF YOUR DEALER CANNOT SUPPLY YOU WITH ANY OF THE ABOVE SONGS, WE WILL ON RECEIPT OF 25c EACH MAIL COPIES TO ALL PARTS OF THE UNITED STATES OR CANADA.

LEAHY COLLECTION
FINE ARTS DEPARTMENT
PUBLIC LIBRARY OF COLUMBIANA