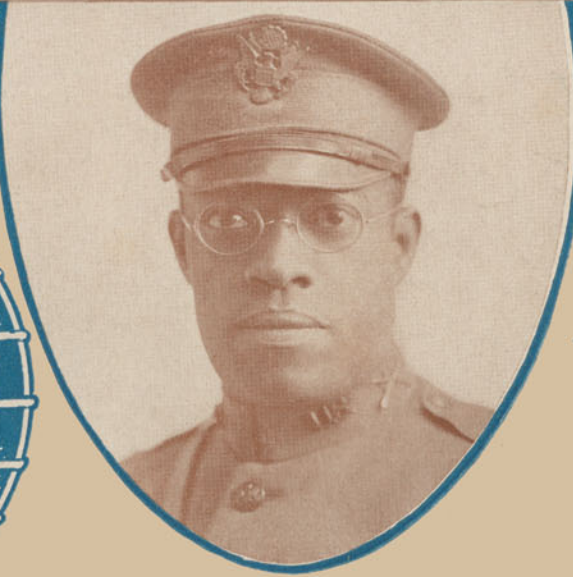
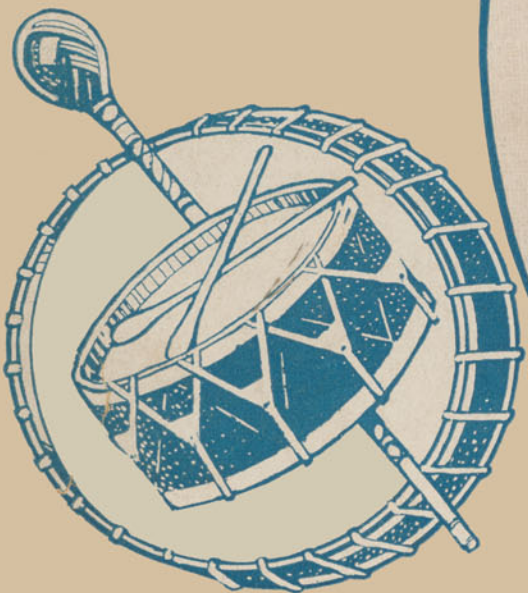


GOOD NIGHT ANGELINE

ADDISON AMUSEMENTS Inc. *Presents*

Lieutenant JIM EUROPE AND HIS FAMOUS 369th U.S. INFANTRY "HELL FIGHTERS" BAND



LIEUT. NOBLE SISSLE

GOOD NIGHT ANGELINE	50
ON PATROL IN NO MAN'S LAND	50
ALL OF NO MAN'S LAND IS OURS	50

By LIEUT. JIM EUROPE, LIEUT. NOBLE SISSLE and EUBIE BLAKE



M. WITMARK & SONS

New York Chicago Philadelphia Boston San Francisco London

Goodnight Angeline

Lieut. JIM EUROPE
Lieut. NOBLE SISSLE
and EUBIE BLAKE

Moderately not too fast

The piano introduction consists of two staves. The right hand features a series of chords and eighth-note patterns, while the left hand provides a steady bass line. Dynamics include *mf* and *sfz*.

Hear dat ole town clock a - strik - ing, An - ge - line;
Hear dat ole church bell a - ring - ing, An - ge - line;

The first system shows the vocal melody and piano accompaniment for the first two lines of the verse. The piano accompaniment includes dynamics *mf* and *p*.

S'pose it's time I should be hik - ing, An - ge - line. — Sho - ly hates to
Hear dat ole choir sweet - ly sing - ing, An - ge - line. — They're all tell - ing

The second system shows the vocal melody and piano accompaniment for the second two lines of the verse. The piano accompaniment includes dynamics *mf* and *p*.

leave you, dear - ie, 'deed I do; Hon - ey chile, when you aint near me, I feel blue. —
of our hap - py wed - ding day, No more, "An - gie," will I ev - er have to say: —

The third system shows the vocal melody and piano accompaniment for the final two lines of the verse. The piano accompaniment includes dynamics *mf* and *p*.

REFRAIN

Good-night, my An-ge - line, - Fare-well, my gal so fine. - Leav - ing - time is griev - ing - time

p-f

Hates to part with ba - by mine; - Night time was made - for - lov - ing, It's the

right time for tur - tle dov - ing; Kiss - es taste much fin - er, Hug - ging seems di - vin - er, But

I must leave you, hon - ey, 'Cause I'm feel - ing fun - ny, Good - night, An - ge - line! - - line! -

1. 2.

ffz

KISS ME AGAIN

LYRIC BY HENRY BLOSSOM AND THE SWEETEST MELODY EVER WRITTEN BY VICTOR HERBERT

ORIGINALLY INTRODUCED BY FRITZI SCHEFF IN THE DELIGHTFUL COMIC OPERA Mlle. MODISTE
THE WELL KNOWN PRIMA DONNA

It is Still Being Featured by Her and Hundreds of Others

ONE OF THE MOST BEAUTIFUL SONGS IN THE WITMARK BLACK AND WHITE SERIES

PUBLISHED AS FOLLOWS

SOLO, FOUR KEYS—F, (a to f) G, (b to g) A, (c# to a) Bb, (d to bb) - 60c. each, NET OCTAVO—OR MIXED VOICES - 25c. NET

DUET, in A, Soprano or Tenor (c# to a) lead and Contralto or Baritone (a to g#) - 75c. NET WALTZ, for PIANO, - - 60c. NET

Valse lento

Sweet sum-mer breeze, whis-per-ing trees, Stars shin-ing soft-ly a-bove; — Ros-es in
ppp molto espress.
bloom, waft-ed per-fume, Sleep-y birds dream-ing of love. — Safe in your arms, far from a-
pp
larms, Day-light shall come but in vain. — Ten-der-ly pressed close to your breast,
ten.

Copyright MCMXV By M. WITMARK & SONS

THE ABOVE CAN BE HAD WHEREVER MUSIC IS SOLD OR OF THE PUBLISHERS

M. WITMARK & SONS — WITMARK BUILDING — NEW YORK

Price, Solo 60c. NET Duet 75c. NET Octavo for Mixed Voices 25c. NET Waltz for Piano 60c. NET

If you are interested in Beautiful Songs (Sacred or Secular) send for our Catalog containing complete Poems and Thematic quotations from some of the most beautiful numbers in the well-known

WITMARK BLACK AND WHITE SERIES

SEND STAMP FOR POSTAGE

