

SELECTIONS
FROM
WILLIAMS & WALKER'S
MUSICAL COMEDY SUCCESS

Bandana Land

D7636
3262
C.2

DIRECTION
F. RAY COMSTOCK



BOOK & LYRICS BY
J. A. SHIPP
AND
ALEX ROGERS
MUSIC BY
WILL MARION COOK
INTERPOLATIONS BY
BERT A. WILLIAMS



FAS 'FAS' WORLD	60¢
BON-BON BUDDY	60¢
SAUCY LITTLE SADIE	60¢
DINAH	60¢
IT'S HARD TO LOVE SOMEBODY	60¢
JUST THE SAME	60¢
I'M VERY FOND OF JOKES	60¢
RED, RED ROSE	60¢
CORN SONG	60¢
UNTIL THEN	60¢
IN BANDANA LAND	60¢
TWO STEP	60¢
WALTZES	75¢
SELECTION	\$1.00



DeVega

Fas', Fas' World.

Words by
ALEX ROGERS.

Music by
BERT A. WILLIAMS.

Moderato.

f *fz*

The piano introduction consists of two staves. The right hand features a series of chords and melodic fragments, while the left hand provides a steady bass line. The tempo is marked 'Moderato' and the dynamics range from *f* to *fz*.

How some folks gits 'long in this world, sho'
A man once come to me and had a
Cy Wil - son took me rid - in' in his

Slow till voice.

p

The first vocal line is followed by piano accompaniment. The tempo is marked 'Slow till voice' and the dynamic is *p*. The piano part features a mix of chords and moving lines in both hands.

is a mys - te - ry, _____ I'se tried to fig - ger out
great tip so he said, _____ I've got a scheme, an if
au - to - mo - bile once, _____ We kept on fly - in' by

The second vocal line continues the melody. The piano accompaniment provides harmonic support with chords and a bass line. The lyrics are aligned with the notes.

Copyright, 1907, by Gotham-Attucks Music Co. Inc., 50 W. 29th St. N. Y.
English Copyright Secured. All Rights Reserved.



how 'tis done, but it's bad phi - los - o - phy, _____ 'Cause
 you'll help me, ther'll be lots of mon - ey made' _____ I
 mar - ble slabs, so I ast Cy like a dunce, _____ Dis

when you stop an trys to think 'bout this or that mans plan, — Right
 went in lost my mon - ey an you bet I sho' was sore, — He
 sho' is one large grave-yard we is pass - in' on our run, — Den

cresc. *rit.*
 there you'se done your self some harm, 'cause, "time waits for no man."
 said, "Dont fret 'bout los - in' aint yo name out on the door?
 Cy says, "Dis here aint no grave-yard, dem is mile stones son."
cresc. *rit.* *fs*

Chorus.

'Tis a fas' world,— one mo' fas,' fas' world,— De
 'Tis a fas' world,— one mo' fas,' fas' world,— He
 'Tis a fas' world,— one mo' fas,' fas' world,— Dat

man what says,— "Oh, I'll git mine,—
 did - 'nt have noth - in' when he went in,—
 night was hot,— but here's a fact,—

Don't you stop to list-in', you'll be left be - hind, 'Cause it's cert'n-ly, sho' - ly,—
 When he left he wore a great big dia-mond pin, Yes, it's cert'n-ly, sho' - ly,—
 I found both my ears frost bit when I got back, Yes, it's cert'n-ly, sho' - ly,—

tru - ly, pos - i - tive - ly, one mo' fas', fas' world. —
 tru - ly, pos - i - tive - ly, one mo' fas', fas' world. —
 tru - ly, pos - i - tive - ly, one mo' fas', fas' world. —

fz *D.S.*

IV.

I met a po' boy on the street, just a few days ago,
 He said, he was jes eight years old, and looked as if 'twas so,
 He said, "I am an orphan, Pa died in the Civil War,
 Give me a quarter to help my Ma, she died right after Pa?"

Chorus.

Tis a fas', fas' world, one mo' fas', fas' world,
 That kid worked on my feelings so,
 I clean forgot that war was thirty years ago,
 Gee this is cert'nly, sho'ly, truly, postively, one mo' fas' fas' world.

V.

I saw six kids jump on one boy, in a side street one day,
 I stopped and asked them why they all bear one boy in that way,
 The bigges' boy of them said to me, "Now, "Cull," jes take your time,
 This kid's been shining shoes for five, the UNION price is a dime.

Chorus.

Yis a fas', fas' world, one mo' fas', fas' world,
 The police came and made a grab,
 The UNION, they all "beat it" but they got the scab,
 My this is cert'nly, sho'ly, truly, postively, one mo' fas', fas' world.

VI.

I heard an undertaker talking to his friend one day,
 I'm going to move away next week, the living here don't pay,
 There's just one doctor in this town and that won't do for me,
 Now, up in Greenville, where I'll move the towns got twenty-three.

Chorus.

It's a fas', fas' world, one mo' fas', fas' world,
 He sure was a master of his trade,
 He's figured out the death rate twenty years ahead,
 Deed this is cert'nly, sho'ly, truly, postively, one mo' fas', fas' world.

SEVEN SONG SUGGESSES

FROM WILLIAMS & WALKER'S NEW MUSICAL CREATION

60 | 4

"BANDANA LAND."

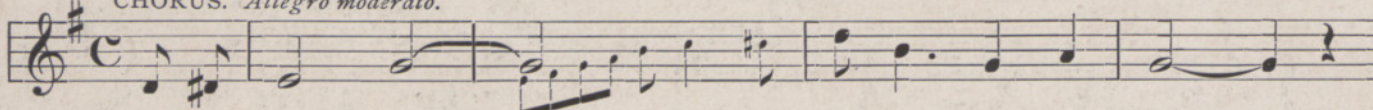
60 | 4

Lyric by ALEX. ROGERS.

FAS', FAS' WORLD.

Music by BERT A. WILLIAMS.

CHORUS. *Allegro moderato.*



'Tis a fas' world,..... One mo' fas', fas' world,.....

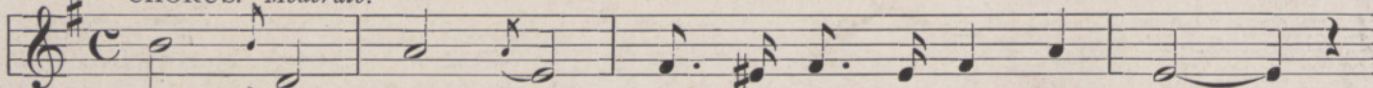
Copyright, 1907, by the Gotham-Attucks Music Co. (Inc.), 50 W. 29th St. N. Y.

Lyric by DAVID KEMPNER.

LATE HOURS.

Music by BERT A. WILLIAMS.

CHORUS. *Moderato.*



Late hours, Late hours, Re - tri - bu - tion comes each morn,.....

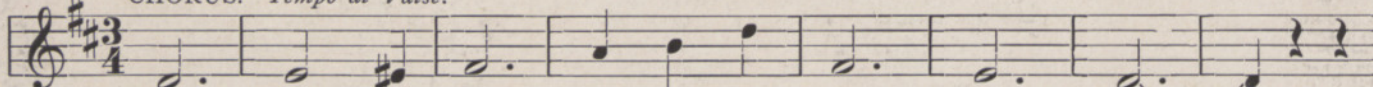
Copyright, 1907, by the Gotham-Attucks Music Co. (Inc.), 50 W. 29th St. N. Y.

Lyric by ALEX. ROGERS.

JUST THE SAME.

Music by WILL MARION COOK.

CHORUS. *Tempo di Valse.*



But if it's love, then it is Just The Same,.....

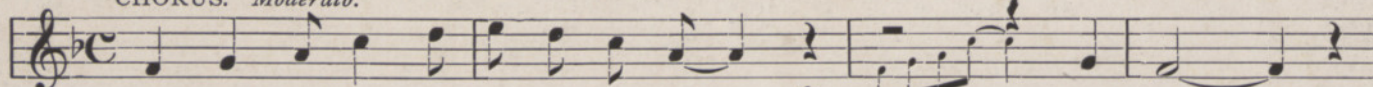
Copyright, 1907, by the Gotham-Attucks Music Co. (Inc.), 50 W. 29th St. N. Y.

Lyric by ALEX. ROGERS.

BON BON BUDDY.

Music by WILL MARION COOK.

CHORUS. *Moderato.*



Bon Bon Bud - dy, the choc - o - late drop, Dat's me;.....

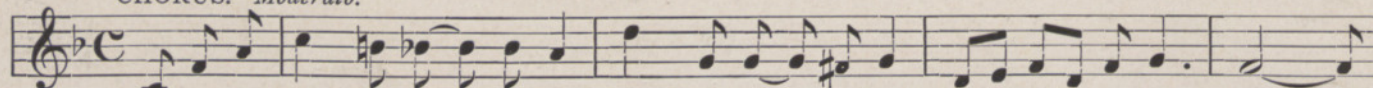
Copyright, 1907, by the Gotham-Attucks Music Co. (Inc.), 50 W. 29th St. N. Y.

Lyric by CECIL MACK.

IT'S HARD TO LOVE SOMEBODY

Music by CHRIS. SMITH.

CHORUS. *Moderato.*



It's hard to love some-bod - y when that some-bod - y is lov-ing some-bod - y else,.....

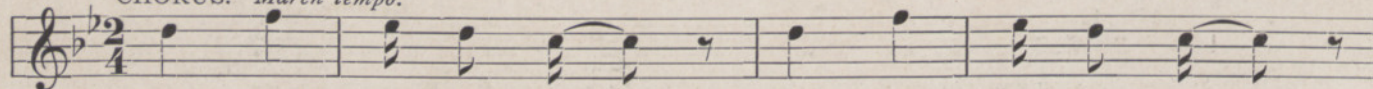
Copyright, 1907, by the Gotham-Attucks Music Co. (Inc.), 50 W. 29th St. N. Y.

Lyric by "MORD" ALLEN.

BANDANA LAND.

Music by WILL MARION COOK.

CHORUS. *March tempo.*



In Ban - da - na Land There we'll take our stand,

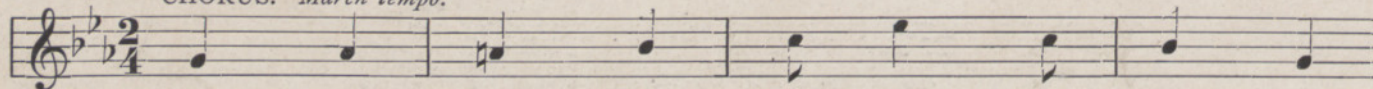
Copyright, 1907, by the Gotham-Attucks Music Co. (Inc.), 50 W. 29th St. N. Y.

Lyric by ALEX. ROGERS.

DINAH.

Music by WILL MARION COOK.

CHORUS. *March tempo.*



Di - nah, Di - nah, no gal am fin - er,

Copyright, 1907, by the Gotham-Attucks Music Co. (Inc.), 50 W. 29th St. N. Y.

— INSTRUMENTAL —

SELECTION—Containing the principal melodies	\$1.00
WALTZ—Containing the two principal waltz themes75
MARCH AND TWO-STEP—Containing the principal march themes.....	.60

THE GOTHAM-ATTUCKS MUSIC CO., 50 West 29th St., NEW YORK.

IF YOUR DEALER CANNOT SUPPLY YOU WITH ANY OF THE ABOVE SONGS, WE WILL ON RECEIPT OF 25c. EACH MAIL COPIES TO ALL PARTS OF THE UNITED STATES OR CANADA.